

JETSTREAM 



In-line **Centrifugal Fans**

features & benefits

Jetstream SJS



Jetstream is a range of backward curved in-line centrifugal fans designed in response to the need for a quieter, more efficient low profile unit where space is restricted in residential and light commercial applications.

- Air volume flow rates of up to 0.21 m³/s.
- Static pressures of up to 300 Pa.
- Two sizes – 150mm and 200mm.
- Highly efficient backward curved impeller.
- Single or three speed motor.
- Clip in mounting bracket.
- Patented non return damper.
- External rotor motor.
- IP44 protection and Class F insulation.
- In built vibration isolation.
- Lower noise levels.
- Greater volume by comparison.
- Optional reducing adaptor.
- Suitable for ambient operating temperatures of up to 50°C.

Features & Benefits

Ease of installation – Mounting the Jetstream is made easy with the simple ‘Clip in’ mounting bracket which can be installed beforehand, the fan then simply clips into position when ready.

Flexibility – A three speed backward curved centrifugal impeller increases the flexibility by allowing the desired speed setting to be selected either at the time of installation or by an optional remote mounted three speed switch.

Material strength – The Jetstream housing and damper is manufactured from fire retardant ABS plastic to provide a robust and durable product.

Motor protection – All SJS units have integral thermal overload protection which prevents the motor from overheating.

Quality impellers – The SJS has highly efficient backward curved centrifugal design impellers, which give exceptional airflow and pressure development making it suitable for the most demanding applications.

Innovative – When dampers are fitted normally, this means a high pressure loss, but the patented optional Smooth flow backdraught damper has superb performance characteristics resulting in virtually no effect on the fans performance.

Slim profile – The low profile design allows the unit to be fitted into small ceiling voids.

Vibration free – The clip in mounting bracket incorporates rubber grommets and a spring design that provides the necessary vibration isolation for the fan – no other means of vibration isolation is required which means substantial cost savings.

Mounting – Each unit is supplied with integral mounting brackets.

Full ancillary range – Speed controllers, reducing duct adaptors, silencers, fast clamps, panel filters, non-return dampers and Y-pieces.

Tested to the very latest standards – SMF units are tested to ISO 5801:1997 (airside performance) and to BS 848 Pt 2:1985 (sound performance) at Elta Fans own test facility, meaning accurate, up to date information on performance and noise data that can be relied upon.

Quality assurance – All units are designed and manufactured with procedures as defined in BS EN ISO 9001: 2000.

Reliability – Motors have sealed for life bearings.

Warranty – Each SJS has a one year warranty.

Applications

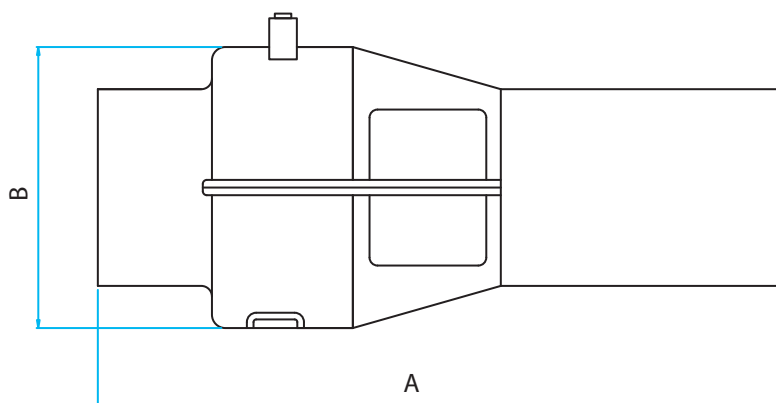
New build & refurbishment housing, apartments, small industrial toilets and shower rooms.

dimensional data

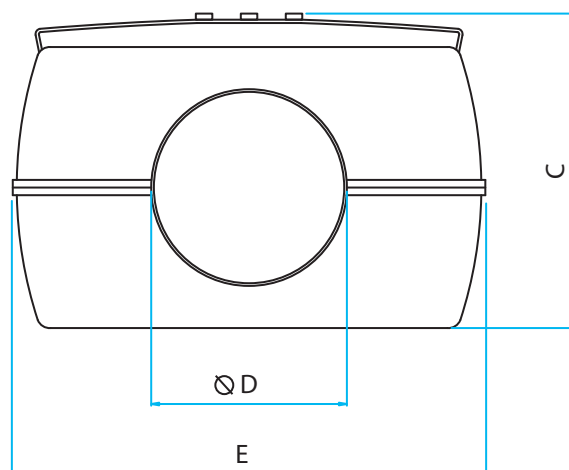
Jetstream SJS



AIRFLOW

With Damper/Without Damper



Product Code	A	B	C	D	E	Weight kg
SJS150	513/350	210	235	147	355	3
SJS200	588/375	240	268	197	380	3.3

N.B. Damper supplied separately, 018-0150-SJSD & 018-0200-SJSD.

performance & electrical data

SJS range

Product Code	Max Speed r/min	Airflow m ³ /s @ Static Pressure Pa										Motor Electrical Data		Speed Electronic	Control Three Speed	dBA @ 3m	
		0	25	50	75	100	125	150	175	200	225	FLC Amps	Input Watts				
Low	1260	0.069	0.045	0.034	0.028	0.023	0.018						0.22	43	EL21	3SP-C	29
SJS150 Mid	1920	0.108	0.096	0.084	0.072	0.061	0.051	0.041	0.032	0.024	0.016	0.25	50	38			
High	2460	0.142	0.133	0.124	0.114	0.104	0.093	0.082	0.069	0.056	0.042	0.29	65	47			

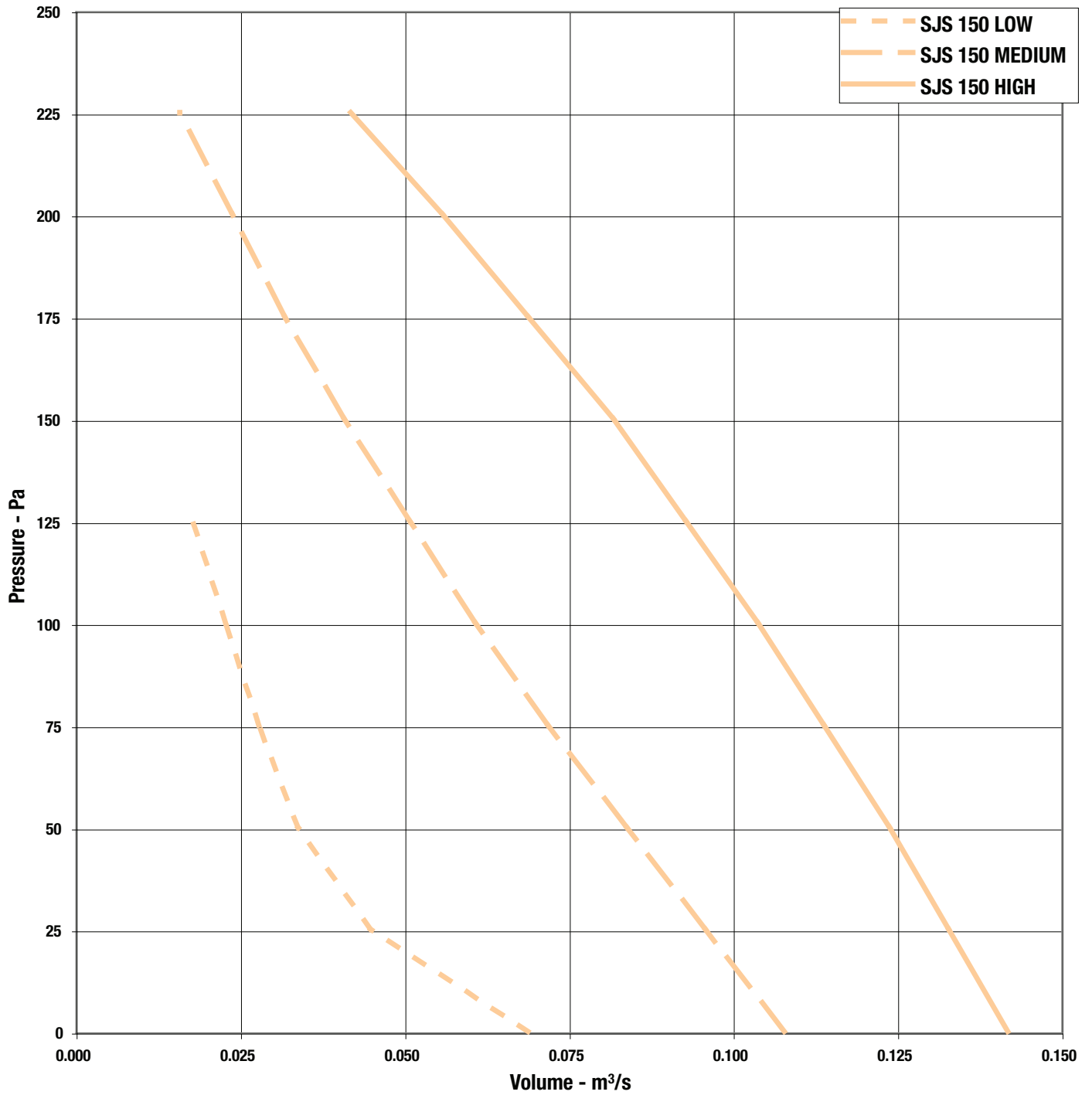
Product Code	Max Speed r/min	Airflow m ³ /s @ Static Pressure Pa										Motor Electrical Data		Speed Electronic	Control Three Speed	dBA @ 3m
		0	25	50	75	100	125	150	175	200	225	FLC Amps	Input Watts			
SJS150S	2460	0.142	0.133	0.124	0.114	0.104	0.093	0.082	0.069	0.056	0.042	0.29	65	EL21	-	47

Product Code	Max Speed r/min	Airflow m ³ /s @ Static Pressure Pa										Motor Electrical Data		Speed Electronic	Control Three Speed	dBA @ 3m	
		0	25	50	75	100	125	150	175	200	250	300	FLC Amps				Input Watts
Low	1130	0.097	0.058	0.028	0.015								0.30	67	EL21	3SP-C	34
SJS200 Mid	1850	0.144	0.118	0.077	0.051	0.039	0.031	0.023	0.015				0.34	74			43
High	2530	0.209	0.200	0.185	0.166	0.150	0.136	0.121	0.106	0.090	0.056	0.025	0.46	103			52

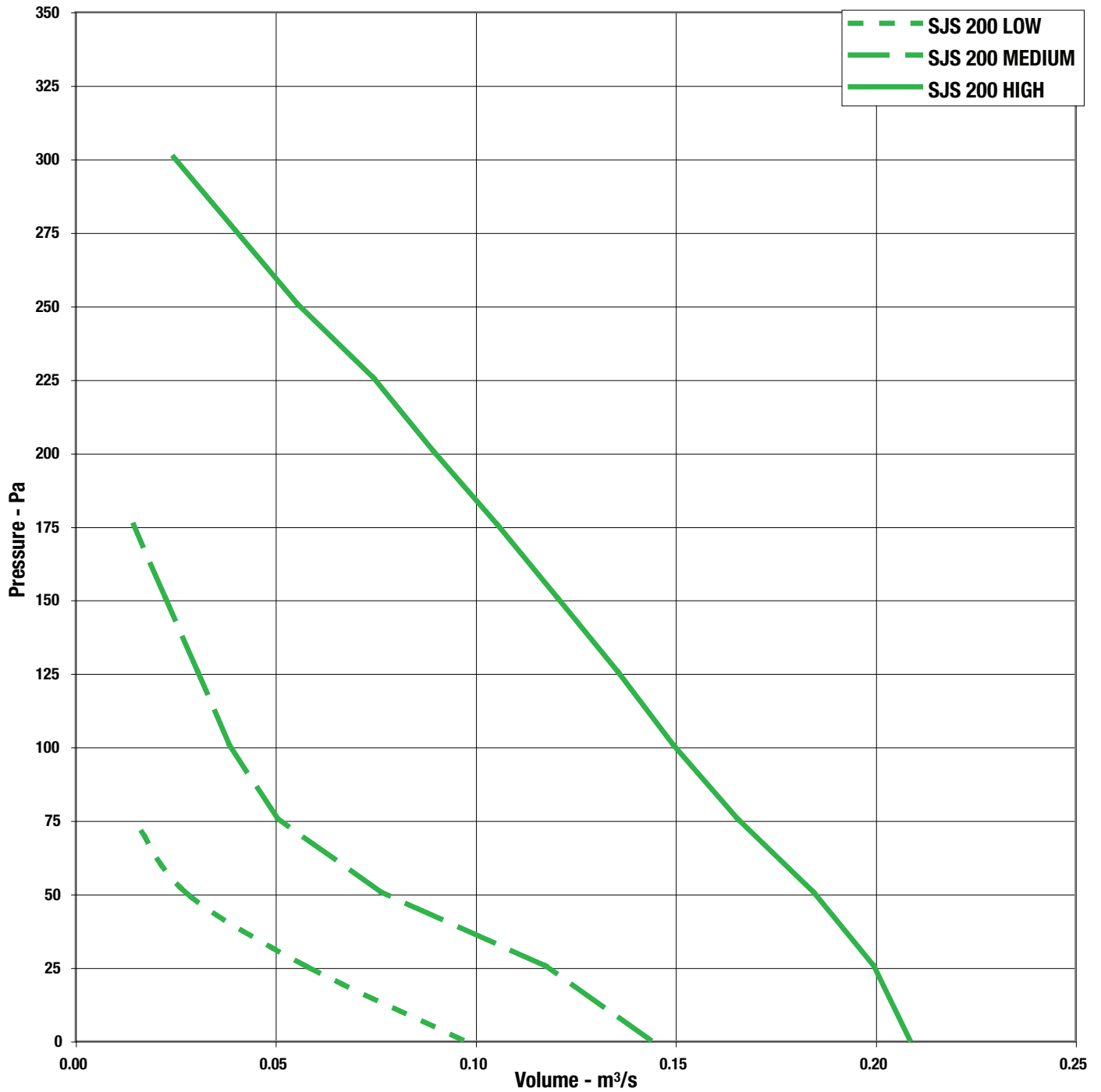
Product Code	Max Speed r/min	Airflow m ³ /s @ Static Pressure Pa										Motor Electrical Data		Speed Electronic	Control Three Speed	dBA @ 3m	
		0	25	50	75	100	125	150	175	200	250	300	FLC Amps				Input Watts
SJS200S	2530	0.209	0.200	0.185	0.166	0.150	0.136	0.121	0.106	0.090	0.056	0.025	0.46	103	EL21	-	52

Sound levels are average spherical free field values fat 50% peak pressure or comparative purposes only.

Jetstream SJS

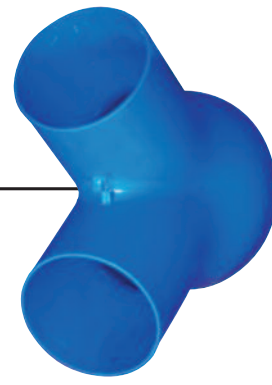


Jetstream SJS



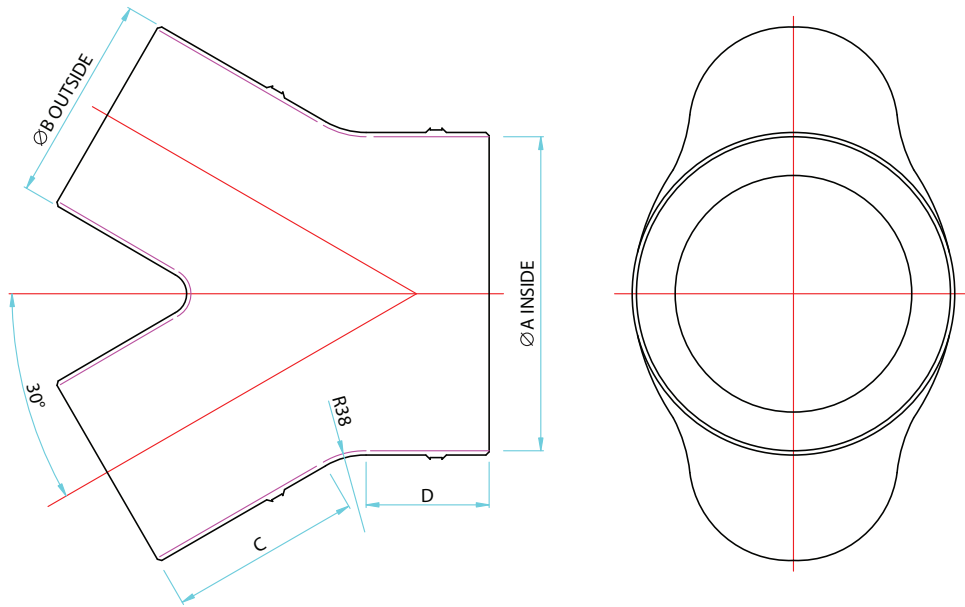
Jetstream SJS

Product Code	63Hz	125Hz	250Hz	500Hz	1kHz	2kHz	4kHz	8kHz	dBA @ 3m
SJS150-3 HI	-	59	57	59	64	63	56	46	47
SJS200-3 HI	43	60	71	65	65	64	59	52	52
SJS150-3 MID	-	50	54	52	54	55	46	36	38
SJS200-3 MID	33	55	67	56	55	53	48	39	43
SJS150-3 LO	-	48	46	42	44	46	31	17	29
SJS200-3 LO	28	55	57	45	44	43	31	22	34



Y-Pieces

- Enables connection to two extract systems
- Injection moulded blue ABS

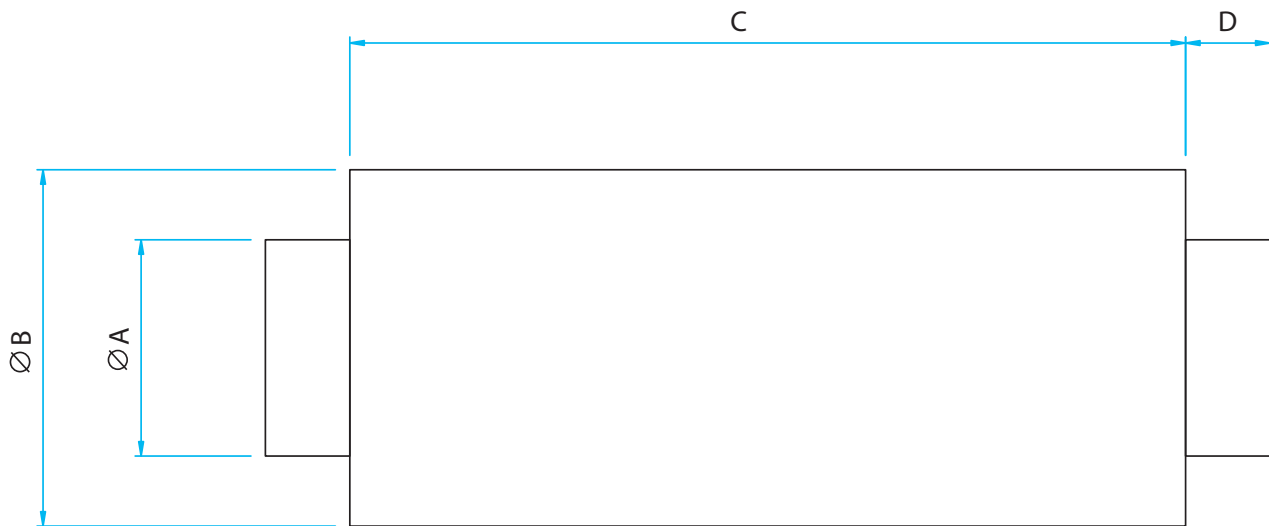


Product Code	A	B	C	D	Weight kg
018-0150-SJSY	147	97	90	58	0.2



silencers

- Pre-galvanised sheet steel with perforated steel lining
- Infill of glass tissue faced high density mineral wool
- For saturated or other special applications please refer to Elta



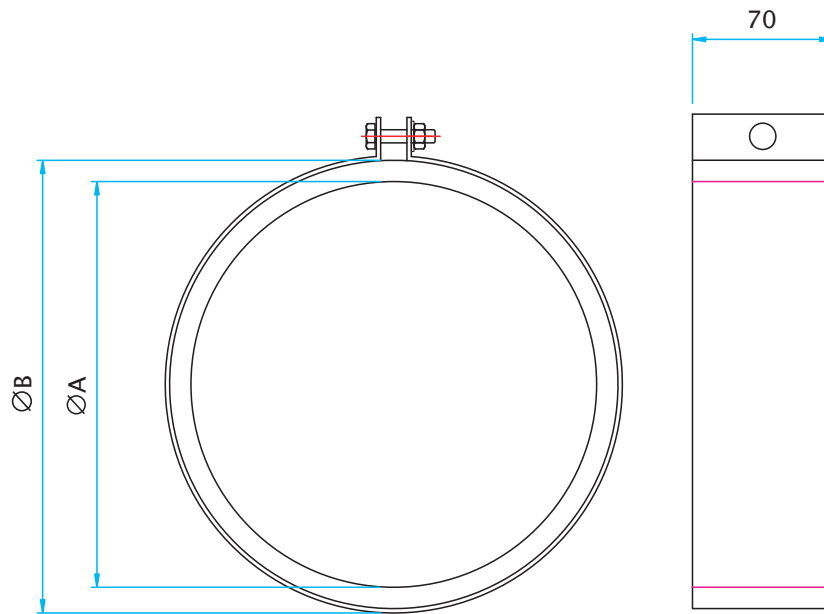
Product Code	Fan Dia	A	B	C1	C2	C3	C4	D	Weight kg			
									1	2	3	4
068-0150-JF*	150	148	255	300	600	900	1200	40	3.4	6.1	8.9	11.6
068-0200-JF*	200	198	305						4.2	7.6	11.0	14.5

* Add 1, 2, 3 or 4 depending on length required.

fast clamps



- For quick connection of spigotted fans to circular duct or accessories
- Galvanised steel circular duct clamp with foam lining

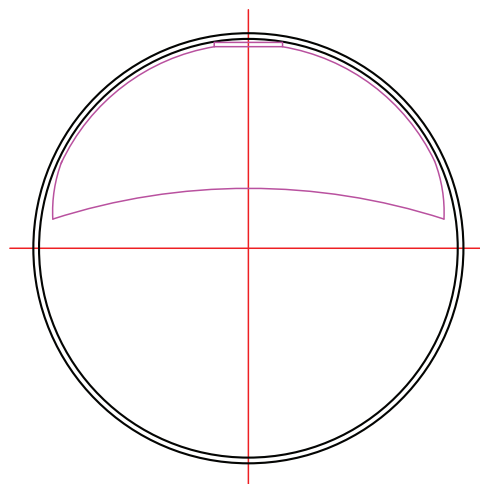
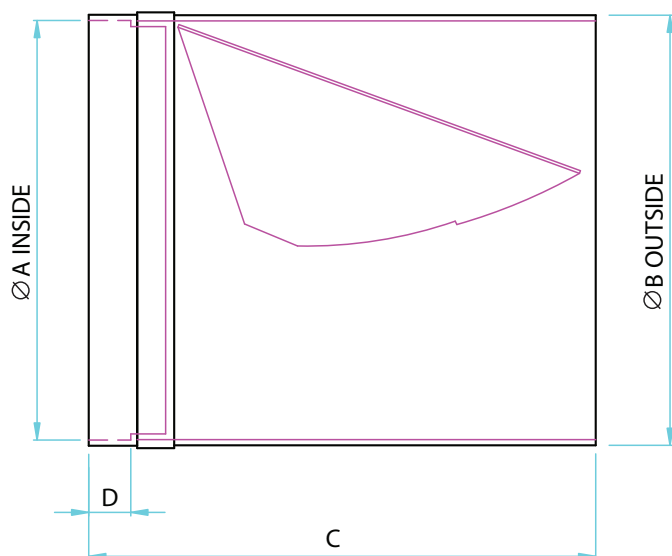


Product Code	Fan Size	A	B	Weight kg
018-150-CLAMP	150	142	166	0.33
018-200-CLAMP	200	192	216	0.42



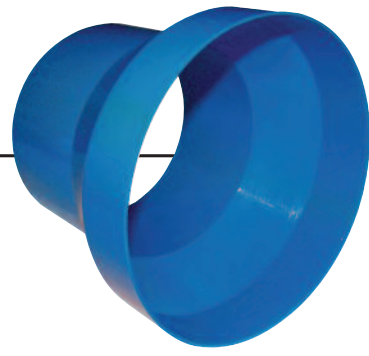
smoothflow dampers

- Prevents reverse flow of air when fan not operating
- Injection moulded blue ABS
- Gravity operated

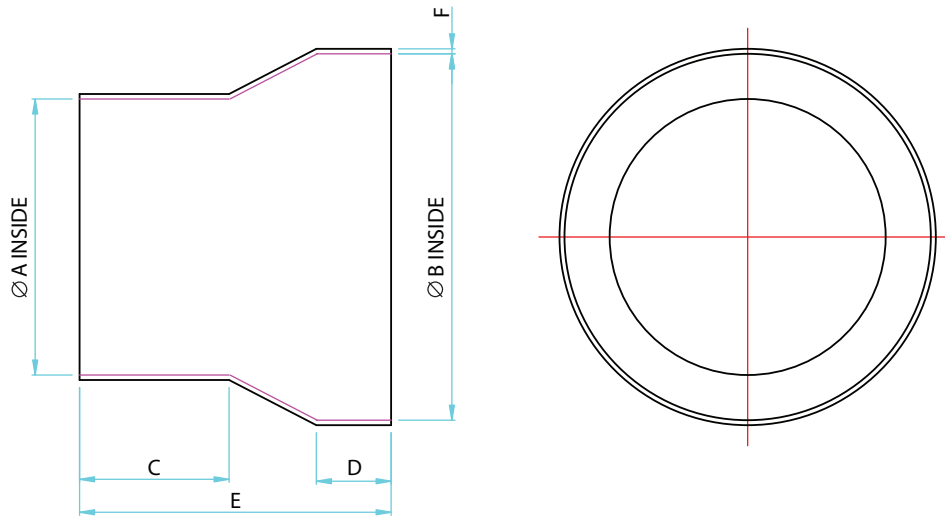


Product Code	A	B	C	D	Weight kg
018-150-SJSD	147	147	178	15	0.3
018-200-SJSD	197	197	228	15	0.1

reducing adapters



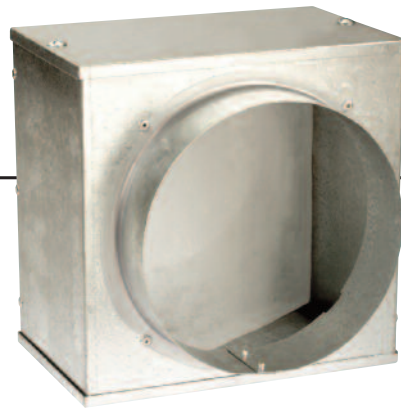
- Enables connection to 100mm PVC pipe
- Injection moulded blue ABS



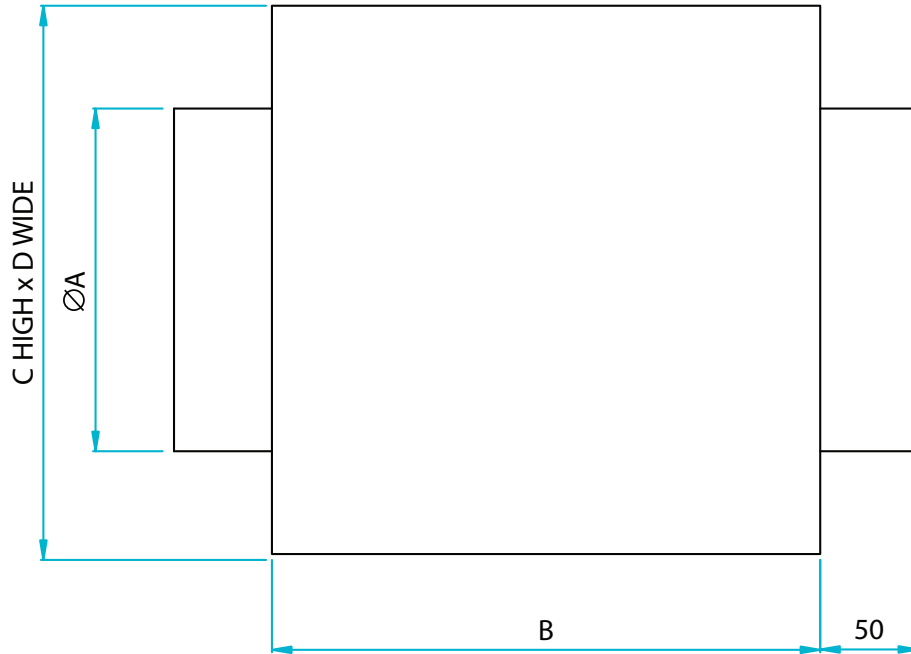
Product Code	A	B	C	D	E	F	Weight kg
018-0150-SJSR	111	147	60	30	125	2	0.1

accessories

panel filters



- Galvanised steel casing
- Filter media to BS EN 779 rating G3 with 85% arrestance
- Filter access with removable panel



Product Code	Fan Dia A	B	C	D	Weight kg
018-0150-FILT-P	150	155	250	250	2
018-0200-FILT-P	200	155	250	250	2



Elta Fans Ltd - Applied Technology

17 Barnes Wallis Road,
Segensworth East Industrial Estate,
Fareham, Hampshire, P015 5ST, United Kingdom.

Visit: eltafans.com

e-mail: mailbox@eltafans.co.uk

Applied Technology:

Tel: +44 (0) 1489 566500

Fax: +44 (0) 1489 566555

Building Services:

Tel: +44 (0) 1384 275800

Fax: +44 (0) 1384 275810

Export:

Tel: +44 (0) 1489 566500

Fax: +44 (0) 1489 566555