

REVOLUTION



Cased Axial Fans

Revolution SLC – Long Cased Features & Benefits



The Revolution SLC is a robust range of long cased axial fans, fitted with the renowned, Elta, adjustable pitch aerofoil section bladed impellers. An industry workhorse, this extensive range offers superb performance characteristics, combined with strength, durability and corrosion resistance for a longer life.

- 11 Sizes from 315mm to 1000mm.
- Air Volume flow rates of up to 18.48 m³/sec.
- Static Pressures of up to 800 Pa.
- Motors are foot mounted totally enclosed metric type.
- Motors to IP55 with Class 'F' insulation to EN 60034-5.
- Suitable for operating temperatures of up to 54° C.
- Ideal for external or internal use.
- Robust heavy duty hot dipped galvanised steel casings.

Remember - Revolution SLC is only a selection of the vast range of adjustable pitch axial fans up to 2m diameter available from Elta Fans

Features & Benefits

Cost effective – High efficiency impellers make this a very economical method of moving high volumes of air at low to medium pressures.

Material strength – Revolution SLC axial fans have a robust, heavy duty construction for added strength and durability. Fan casings are heavy gauge, sheet steel, roll formed and welded and hot dipped galvanised after fabrication to BS 729.

Impeller design – Adjustable pitch aerofoil section impellers with blades made from high quality pressure die cast aluminium. Hubs are pressure die cast aluminium.

Choice – An extensive range of 11 sizes from 315mm to 1000mm diameter means wider performance and greater choice for the engineer.

Stock availability – The stocked range of Revolution fans are available on 'Next day' delivery. Standard fans within 10 days which still provides a quick turnaround with urgent projects.

Flexible performance – Adjustable pitch impellers mean the pitch angle of the impeller can be adjusted on site (within limits) if a commissioning problem were to occur.

Inspection access – All units are supplied with an inspection hole which means the correct rotation of the impeller can be checked for ease of commissioning and general maintenance checks.

Ease of installation – The centrally mounted motor is wired via a flexible weatherproofed cable system to an externally located IP55 protected terminal box.

Integral flanges – Casings have integral spun flanges for a smooth airflow.

Full accessory range – Speed controllers, inverters, flexible connectors and clips, matching flanges, anti-vibration mounts, mounting feet, silencers, wire guards, bell mouth inlets and non return dampers - All selected in advance to match the fan, which means this avoids any on site installation and fitting problems.

Tested to the very latest standards – SLC units are tested to ISO 5801:1997 (airside performance) and to BS 848 Pt 2:1985 (sound performance) at Elta Fans own test facility, meaning accurate, up to date information on performance and noise data that can be relied upon.

Quality assurance – All units are designed and manufactured with procedures as defined in BS EN ISO 9001: 2000.

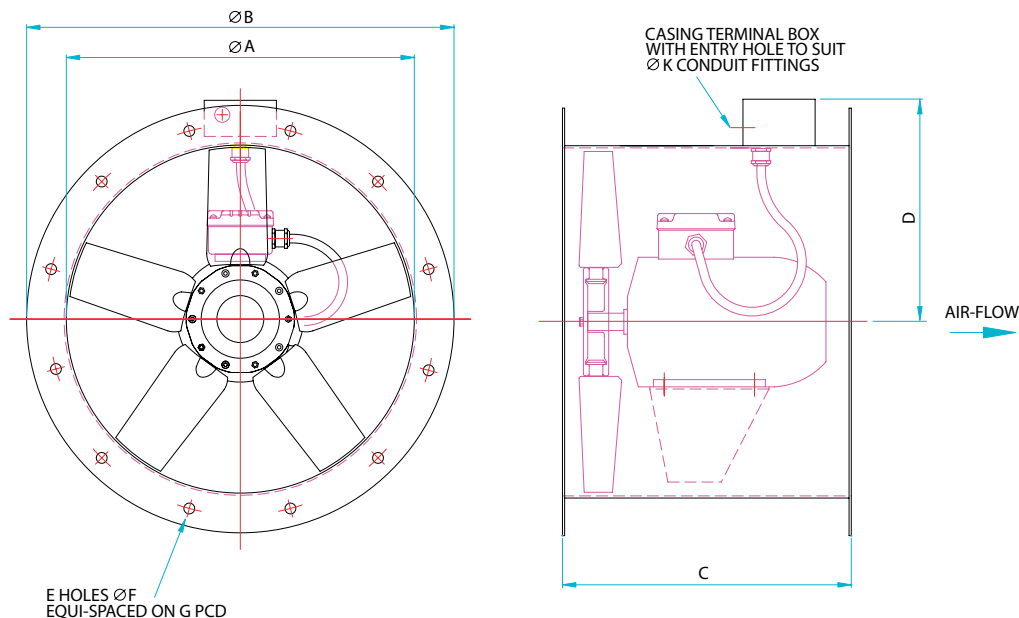
Warranty – Each Revolution SLC has a 12 month warranty.

Applications

Kitchen canopy systems, agriculture, sports halls, industrial units, warehousing, factories, schools, air conditioning units, cooling towers, stations, marine, airports, hotels.

Revolution SLC - Long Cased

Dimensional Data



AXIAL FLOW

Product Code	Fan Dia A	B	C	D	E	F	G	K	Weight kg	
									1Ph	3Ph
SLC315	315	375	300	225	8	10	355	20	17	17
SLC355	355	425	375	245	8	10	395	20	21	26
SLC400	400	475	400	265	8	12	450	20	27	31
SLC450	450	530	375	290	8	12	500	20	30	30
SLC450/2-3B	450	530	450	290	8	12	500	25	-	45
SLC500	500	585	400	315	12	12	560	20	33	33
SLC500/2-3	500	585	450	315	12	12	560	25	-	52
SLC560	560	645	400	345	12	12	620	20	40	40
SLC560/2-3	560	645	570	345	12	12	620	25	-	96
SLC630	630	715	400	380	12	12	690	20	50	47
SLC630/4-3B	630	715	450	380	12	12	690	20	-	58
SLC710	710	795	450	420	16	12	770	20	-	70
SLC710/4-3B	710	795	450	420	16	12	770	25	-	72
SLC800	800	885	450	465	16	12	860	25	-	75
SLC800/4-3B	800	885	570	465	16	12	860	25	-	97
SLC900/8-3	900	1000	450	465	16	15	970	25	-	107
SLC900/6-3A	900	1000	450	515	16	15	970	25	-	107
SLC900/6-3B	900	1000	570	515	16	15	970	25	-	127
SLC900/4-3A	900	1000	570	515	16	15	970	25	-	135
SLC900/4-3B	900	1000	710	515	16	15	970	32	-	183
SLC1000	1000	1110	590	565	16	15	1070	25	-	143
SLC1000/4-3B	1000	1110	790	565	16	15	1070	32	-	222
SLC1000/4-3C	1000	1110	790	565	16	15	1070	32	-	239

Accessories



Revolution SLC - Long Cased Performance & Electrical Data



SINGLE Phase - 220V-240V / 50Hz

Product Code	Speed r/min	Airflow m ³ /s @ Static Pressure Pa.										Motor Electrical Data			A.V. Mounts	Speed Control		dBA @ 3m
		0	50	100	150	200	250	300	400	500	600	FLC Amps	SC Amps	Output kW		Electr-onic	Trans-former	
SLC315/4-2	1300	0.63	0.55	0.38								1.09	2.30	0.12	S1G	EL31	TC12	45
SLC315/2-1	2750	1.26	1.20	1.13	1.06	0.98	0.87	0.71				3.20	9.77	0.55	S1G	-	-	54
SLC355/4-2	1300	0.85	0.76	0.63								1.51	3.69	0.18	S1G	EL31	TC12	48
SLC355/2-1	2820	1.42	1.39	1.36	1.32	1.30	1.26	1.22	1.13	1.01		6.30	20.0	1.1	S1G	-	-	64
SLC400/4-2	1350	1.44	1.32	1.15								2.56	5.93	0.37	S1G	EL31	TC14	52
SLC400/2-1	2780	2.07	2.03	1.98	1.92	1.88	1.84	1.79	1.68	1.53	1.26	8.10	30.1	1.5	S2B	-	-	66
SLC450/4-2A	1350	1.68	1.56	1.40	1.12							2.56	5.93	0.37	S2B	EL31	TC14	55
SLC450/4-2B	1350	2.07	1.89	1.67	1.38							3.70	11.9	0.55	S2B	EL61	TC18	55
SLC450/2-1	2780	3.03	2.93	2.84	2.73	2.62	2.51	2.36	2.00	1.44		8.10	30.1	1.5	S2B	-	-	68
SLC500/4-2A	1350	1.81	1.70	1.57	1.36	1.00						2.56	5.93	0.37	S2B	EL31	TC14	58
SLC500/4-2B	1380	2.58	2.42	2.22	2.00	1.64						4.52	11.3	0.75	S2B	EL61	TC18	58
SLC560/4-2A	1380	2.90	2.78	2.62	2.42	2.10						4.52	11.3	0.75	S2B	EL61	TC18	59
SLC560/4-2B	1350	3.35	3.15	2.96	2.71	2.35						6.28	16.4	1.0	S2B	EL101	TC18	59
SLC630/6-1A	950	2.54	2.28	1.86								2.30	5.25	0.37	S2B	-	-	58
SLC630/6-1B	950	3.31	2.95	2.48								3.92	9.75	0.55	S2B	-	-	58
SLC630/4-2	1350	3.72	3.56	3.36	3.12	2.78	2.22					6.28	16.4	1.0	S2B	EL101	TC18	64

Sound levels are average spherical free field values at 50% peak pressure for comparative purposes only.

Silencer Data

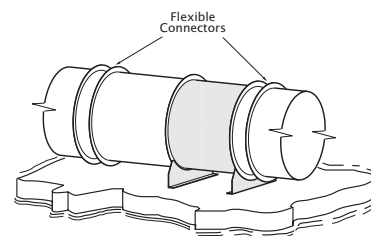
Product Code	dBA Attenuation		ΔP (Pa) 1DEP	dBA Attenuation		ΔP (Pa) 2DEP
	1DENP	1DEP		2DENP	2DEP	
SLC315/4-2	-8	-11	11	-13	-15	18
SLC315/2-1	-9	-12	41	-14	-15	66
SLC355/4-2	-9	-12	17	-14	-16	27
SLC355/2-1	-9	-11	52	-14	-15	82
SLC400/4-2	-9	-12	24	-14	-16	38
SLC400/2-1	-9	-13	47	-15	-17	76
SLC450/4-2A	-9	-12	20	-15	-15	32
SLC450/4-2B	-9	-12	30	-14	-15	47
SLC450/2-1	-10	-16	60	-16	-22	95
SLC500/4-2A	-9	-15	15	-16	-22	25
SLC500/4-2B	-9	-14	30	-14	-15	48
SLC560/4-2A	-9	-15	24	-16	-21	39
SLC560/4-2B	-9	-13	32	-15	-15	51
SLC630/6-1A	-11	-15	12	-16	-23	19
SLC630/6-1B	-11	-14	20	-15	-21	33
SLC630/4-2	-10	-14	25	-15	-25	40

For explanation of silencer data see p20.

Isolating Vibrating Fans

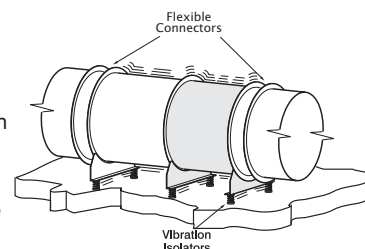
DO NOT!

Do not bolt fan directly to the building structure as noise and vibration can be transmitted directly to the building fabric.



DO!

Isolate fan and duct from the building structure with fan on neoprene or vibration isolators and suitable flexible connectors.



Revolution SLC - Long Cased Performance & Electrical Data



THREE Phase - 380V-415V / 50Hz

Product Code	Speed r/min	Airflow m ³ /s @ Static Pressure Pa.												Motor Electrical Data			A.V. Mounts	Speed Control Transformer	dBA @ 3m
		0	50	100	150	200	250	300	400	500	600	700	800	FLC Amps	SC Amps	Output kW			
SLC315/4-3	1365	0.64	0.58	0.46										0.44	1.94	0.12	S1G	TC33	46
SLC315/2-3	2780	0.95	0.93	0.91	0.88	0.84	0.82	0.78	0.66					1.40	8.54	0.55	S1G	-	61
SLC355/4-3	1340	0.85	0.77	0.66										0.62	3.22	0.18	S1G	TC33	49
SLC355/2-3A	2800	1.48	1.45	1.42	1.38	1.34	1.31	1.26	1.17	1.03				2.50	17.9	1.1	S1G	-	64
SLC355/2-3B	2840	1.93	1.89	1.85	1.82	1.77	1.73	1.68	1.56	1.40				4.80	33.6	2.2	S2B	-	63
SLC400/4-3	1390	1.42	1.31	1.16										1.12	5.82	0.37	S1G	TC33	52
SLC400/2-3	2840	2.40	2.37	2.34	2.29	2.25	2.22	2.16	2.04	1.88	1.67			4.80	33.6	2.2	S2B	-	67
SLC450/4-3A	1390	1.70	1.57	1.42	1.18									1.12	5.82	0.37	S2B	TC33	56
SLC450/4-3B	1365	2.04	1.88	1.70	1.43									1.57	9.42	0.55	S2B	TC33	56
SLC450/2-3A	2840	2.89	2.82	2.78	2.72	2.66	2.60	2.53	2.39	2.22	2.00			4.80	33.6	2.2	S2B	-	75
SLC450/2-3B	2850	3.83	3.79	3.74	3.69	3.63	3.57	3.50	3.31	3.10	2.84	2.50		8.82	61.7*	4.0	S2B	-	75
SLC500/4-3A	1390	1.72	1.63	1.50	1.30	1.03	0.50							1.12	5.82	0.37	S2B	TC33	58
SLC500/4-3B	1370	2.59	2.41	2.23	2.00	1.62								2.00	11.4	0.75	S2B	-	58
SLC500/4-3C	1380	3.00	2.83	2.60	2.32									2.90	15.4	1.1	S2B	TC33	58
SLC500/2-3A	2850	4.12	4.08	4.02	3.98	3.90	3.84	3.75	3.63	3.46	3.25	3.02	2.70	8.82	61.7*	4.0	S2	-	78
SLC500/2-3B	2935	4.76	4.72	4.68	4.60	4.52	4.46	4.40	4.24	4.08	3.88	3.63	3.32	10.3	82.4*	5.5	S2	-	71
SLC560/4-3A	1370	2.80	2.67	2.52	2.29	1.98								2.00	11.4	0.75	S2B	-	59
SLC560/4-3B	1380	3.50	3.31	3.13	2.88	2.60								2.90	15.4	1.1	S2B	TC33	60
SLC560/4-3C	1390	4.06	3.85	3.60	3.32	2.94								3.70	20.4	1.5	S2B	TC35	60
SLC560/2-3	2920	6.70	6.63	6.51	6.37	6.30	6.18	6.05	5.80	5.53	5.25	4.88	4.50	13.6	92.5*	7.5	S2	-	75
SLC630/6-3A	925	2.78	2.40	1.90										1.11	5.77	0.37	S2B	TC33	57
SLC630/6-3B	920	3.40	3.04	2.48										1.61	8.53	0.55	S2B	TC33	59
SLC630/4-3A	1380	3.69	3.52	3.32	3.08	2.76	2.32							2.50	15.4	1.1	S2B	TC33	64
SLC630/4-3B	1400	5.40	5.17	4.90	4.61	4.30	3.88							5.20	25.0	2.2	S2	TC310	63

AXIAL FLOW

Silencer Data

Product Code	dBA Attenuation		Δ P (Pa)	dBA Attenuation		Δ P (Pa)
	1DENP	1DEP		2DENP	2DEP	
	1DEP	2DEP	1DEP	2DEP		
SLC315/4-3	-8	-11	12	-13	-15	19
SLC315/2-3	-9	-14	25	-16	-21	40
SLC355/4-3	-9	-12	17	-14	-16	27
SLC355/2-3A	-9	-11	47	-14	-15	77
SLC355/2-3B	-9	-12	80	-14	-15	127
SLC400/4-3	-9	-12	23	-14	-16	37
SLC400/2-3	-9	-11	67	-14	-15	108
SLC450/4-3A	-9	-12	20	-15	-15	30
SLC450/4-3B	-9	-12	32	-14	-15	52
SLC450/2/3A	-9	-16	57	-16	-24	92
SLC450/2/3B	-9	-13	110	-14	-15	177
SLC500/4-3A	-9	-15	12	-16	-21	19
SLC500/4-3B	-9	-12	30	-14	-15	48
SLC500/4-3C	-9	-12	42	-14	-15	67
SLC500/2-3A	-9	-16	72	-16	-24	116
SLC500/2-3B	-10	-13	100	-15	-15	160
SLC560/4-3A	-9	-15	22	-16	-21	36
SLC560/4-3B	-8	-12	35	-14	-15	57
SLC560/4-3C	-8	-12	48	-14	-15	78
SLC560/2-3	-9	-12	120	-14	-15	192
SLC630/6-3A	-11	-15	13	-16	-23	21
SLC630/6-3B	-9	-14	21	-15	-21	34
SLC630/4-3A	-10	-16	25	-15	-25	40
SLC630/4-3B	-10	-14	54	-14	-21	87

Sound levels are average spherical free field values at 50% peak pressure for comparative purposes only.

All starting currents are quoted as direct-on-line. Those marked * are available for star-delta starting if required.

For sizes 710mm to 1000mm see p38

Revolution SLC - Long Cased Performance & Electrical Data



THREE Phase - 380V-415V / 50Hz

Product Code	Speed r/min	Airflow m ³ /s @ Static Pressure Pa.										Motor Electrical Data			A.V. Mounts	Speed Control Transformer	dBA @ 3m
		0	50	100	150	200	250	300	400	500	600	FLC Amps	SC Amps	Output kW			
SLC710/6-3A	920	3.80	3.40	2.85								1.61	8.53	0.55	S2B	TC33	60
SLC710/6-3B	940	5.56	5.06	4.28								4.30	22.3	1.5	S2	TC310	61
SLC710/4-3A	1405	7.12	6.82	6.52	6.18	5.82	5.38	4.76				6.78	47.5	3.0	S2G	-	70
SLC710/4-3B	1420	8.18	7.88	7.52	7.17	6.75	6.22					8.82	61.7*	4.0	S2G	-	71
SLC800/6-3A	940	6.92	6.38	5.62								4.30	22.3	1.5	S2	TC310	65
SLC800/6-3B	940	7.48	7.02	6.50	5.69							5.36	30.5	2.2	S2G	-	70
SLC800/4-3A	1420	8.28	8.08	7.82	7.54	7.22	6.87	6.48	5.55			8.82	61.7*	4.0	S2G	-	77
SLC800/4-3B	1470	9.60	9.38	9.08	8.82	8.50	8.16	7.80	6.90			10.6	84.8*	5.5	S2G	-	77
SLC900/8-3	710	8.00	7.22	6.00								4.08	22.4	1.5	S2Y	-	63
SLC900/6-3A	930	8.18	7.72	7.20	6.55	5.66						5.36	30.5	2.2	S2G	-	71
SLC900/6-3B	950	9.45	9.02	8.48	7.82	6.95						6.82	36.1	3.0	S2G	-	70
SLC900/4-3A	1470	12.10	11.78	11.47	11.16	10.78	10.39	10.00	9.00	7.70		14.2	114*	7.5	S2Y	-	81
SLC900/4-3B	1470	14.70	14.39	14.04	13.76	13.38	13.02	12.60	11.65	10.38		21.0	126*	11	S3B	-	79
SLC1000/8-3	710	8.60	7.90	6.92								4.08	22.4	1.5	S2Y	-	66
SLC1000/6-3A	930	9.16	8.65	8.09	7.38	6.52	5.10					5.36	30.5	2.2	S2Y	-	71
SLC1000/6-3B	950	10.70	10.15	9.57	8.88	8.00	6.88					6.82	36.1	3.0	S2Y	-	71
SLC1000/4-3A	1470	13.20	12.86	12.50	12.19	11.80	11.42	10.96	9.90	8.70		14.2	114*	7.5	S2Y	-	83
SLC1000/4-3B	1470	16.00	15.62	15.35	15.02	14.62	14.18	13.71	12.71	11.50	9.77	21.0	126*	11	S3B	-	83
SLC1000/4-3C	1460	18.48	18.22	17.92	17.48	17.15	16.84	16.35	15.35	14.12	12.38	28.4	170*	15	S3B	-	84

Sound levels are average spherical free field values at 50% peak pressure for comparative purposes only.

All starting currents are quoted as direct-on-line. Those marked * are available for star-delta starting if required.

Silencer Data

Product Code	dBA Attenuation		ΔP (Pa) 1DEP	dBA Attenuation		ΔP (Pa) 2DEP
	1DENP	1DEP		2DENP	2DEP	
SLC710/6-3A	-12	-17	14	-17	-25	23
SLC710/6-3B	-11	-14	35	-15	-21	56
SLC710/4-3A	-10	-14	57	-14	-21	91
SLC710/4-3B	-10	-14	73	-14	-21	117
SLC800/6-3A	-12	-14	33	-16	-21	53
SLC800/6-3B	-11	-15	40	-15	-22	64
SLC800/4-3A	-10	-19	48	-15	-28	77
SLC800/4-3B	-10	-15	67	-14	-22	108
SLC900/8-3	-11	-15	29	-15	-20	46
SLC900/6-3A	-9	-13	29	-13	-19	46
SLC900/6-3B	-11	-15	40	-15	-20	64
SLC900/4-3A	-9	-15	64	-13	-21	103
SLC900/4-3B	-9	-14	99	-13	-20	159
SLC1000/8-3	-9	-15	22	-15	-20	36
SLC1000/6-3A	-10	-15	42	-16	-24	68
SLC1000/6-3B	-10	-15	23	-14	-20	38
SLC1000/4-3A	-9	-16	33	-14	-26	53
SLC1000/4-3B	-9	-16	45	-14	-26	73
SLC1000/4-3C	-10	-15	71	-13	-21	114

For sizes 315mm to 630mm see p37

For explanation of silencer data see p20.

Revolution SLC - Long Cased

Sound Data



SLC - SINGLE Phase

Product Code	63Hz	125Hz	250Hz	500Hz	1kHz	2kHz	4kHz	8kHz	dBA @ 3m
SLC315/2-1	76	75	72	72	70	67	63	58	54
SLC355/2-1	83	81	80	84	78	77	74	67	64
SLC400/2-1	85	83	82	86	80	79	76	69	66
SLC450/2-1	81	78	85	82	85	83	80	76	68
SLC315/4-2	63	63	68	60	60	59	56	49	45
SLC355/4-2	66	65	69	66	63	62	59	52	48
SLC400/4-2	70	69	73	70	67	66	63	56	52
SLC450/4-2A	68	69	71	70	72	69	66	59	55
SLC500/4-2A	71	72	74	73	75	72	69	62	58
SLC560/4-2A	77	77	76	75	75	74	71	66	59
SLC630/4-2	82	74	82	80	81	78	76	72	64
SLC450/4-2B	74	71	74	71	70	69	67	60	55
SLC500/4-2B	77	74	77	74	73	72	70	63	58
SLC560/4-2B	77	77	76	75	75	74	71	66	59
SLC630/6-1A	77	77	76	77	74	70	67	57	58
SLC630/6-1B	77	77	76	77	74	70	67	57	58

Revolution SLC - Long Cased

Sound Data



SLC - THREE Phase

Product Code	63Hz	125Hz	250Hz	500Hz	1kHz	2kHz	4kHz	8kHz	dBA @ 3m
SLC315/2-3	80	76	79	79	77	74	74	68	61
SLC355/2-3A	83	81	80	84	78	77	74	67	64
SLC400/2-3	86	84	83	87	81	80	77	70	67
SLC450/2-3A	88	83	85	91	91	90	88	84	75
SLC500/2-3A	91	86	88	94	94	93	91	87	78
SLC560/2-3	91	88	92	93	90	88	86	83	75
SLC355/2-3B	82	84	81	82	78	77	74	69	63
SLC450/2-3B	87	83	85	90	91	90	87	83	75
SLC500/2-3B	84	81	88	85	88	86	83	79	71
SLC315/4-3	64	64	69	61	61	60	57	50	46
SLC350/4-3	67	66	70	67	64	63	60	53	49
SLC400/4-3	70	69	73	70	67	66	63	56	52
SLC450/4-3A	69	70	72	71	73	70	67	60	56
SLC500/4-3A	71	72	74	73	75	72	69	62	58
SLC560/4-3A	77	77	76	75	75	74	71	66	59
SLC630/4-3A	82	74	82	80	81	78	76	72	64
SLC710/4-3A	87	84	87	87	86	84	84	75	70
SLC800/4-3A	89	82	88	91	94	92	87	80	77
SLC900/4-3A	92	84	88	95	98	97	91	83	81
SLC1000/4-3A	94	87	90	97	100	99	93	85	83
SLC450/4-3B	75	72	75	72	71	70	68	61	56
SLC500/4-3B	77	74	77	74	73	72	70	63	58
SLC560/4-3B	78	76	79	77	75	74	72	66	60
SLC630/4-3B	80	79	82	80	79	77	76	69	63
SLC710/4-3B	88	85	88	88	87	85	85	76	71
SLC800/4-3B	89	82	88	91	94	92	87	80	77
SLC900/4-3B	94	92	94	93	96	94	86	81	79
SLC1000/4-3B	94	87	90	97	100	99	93	85	83
SLC1000/4-3C	98	93	96	99	101	100	93	85	84
SLC500/4-3C	77	74	77	74	73	72	70	63	58
SLC560/4-3C	78	76	79	77	75	74	72	66	60
SLC630/6-3A	76	76	75	76	73	69	66	56	57
SLC710/6-3A	83	77	75	81	76	71	69	61	60
SLC800/6-3A	89	85	84	86	81	76	72	64	65
SLC900/6-3A	91	89	94	86	87	85	79	70	71
SLC1000/6-3A	88	81	87	89	88	84	77	71	71
SLC630/6-3B	81	74	78	77	76	72	68	58	59
SLC710/6-3B	82	79	80	81	76	71	70	59	61
SLC800/6-3B	92	84	88	89	87	84	78	69	70
SLC900/6-3B	91	86	88	89	87	79	74	69	70
SLC1000/6-3B	88	81	87	89	88	84	77	71	71
SLC900/8-3	84	77	81	82	80	72	67	67	63
SLC1000/8-3	84	80	81	86	84	78	69	65	66

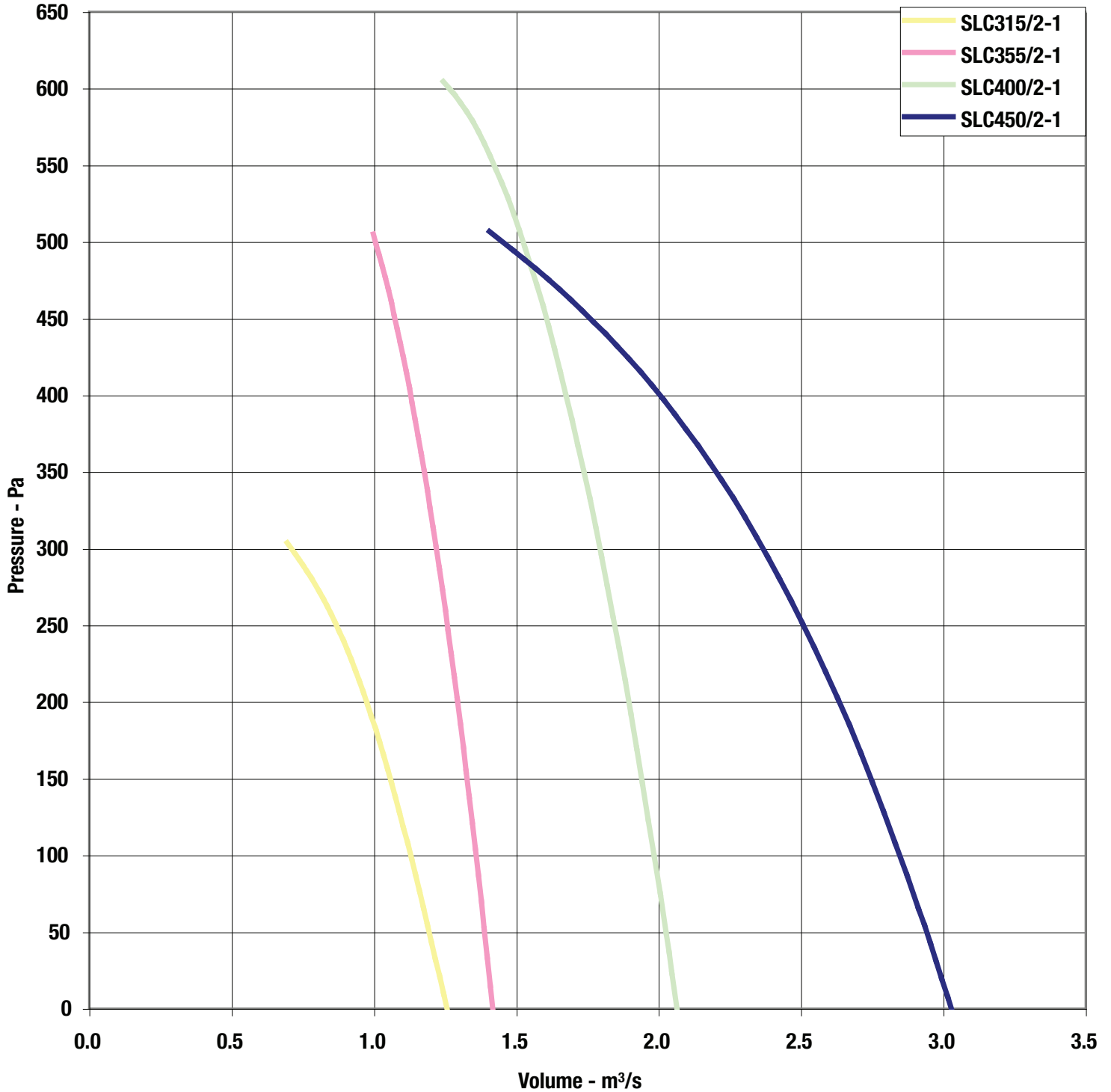
Acoustic data: tests and preparation of data have been carried out in accordance with BS848 Part 2(1985). The In-duct Sound Power Level Spectra are in dB re 1pW. The overall A-Scale sound pressure level is at a distance of three metres with spherical propagation. It is expressed in dB re 20uPa and is presented for comparative purposes only as in practice the semi-reverberant nature of any installation and directivity effects can give a different level.

Revolution SLC - Long Cased

Performance Curves



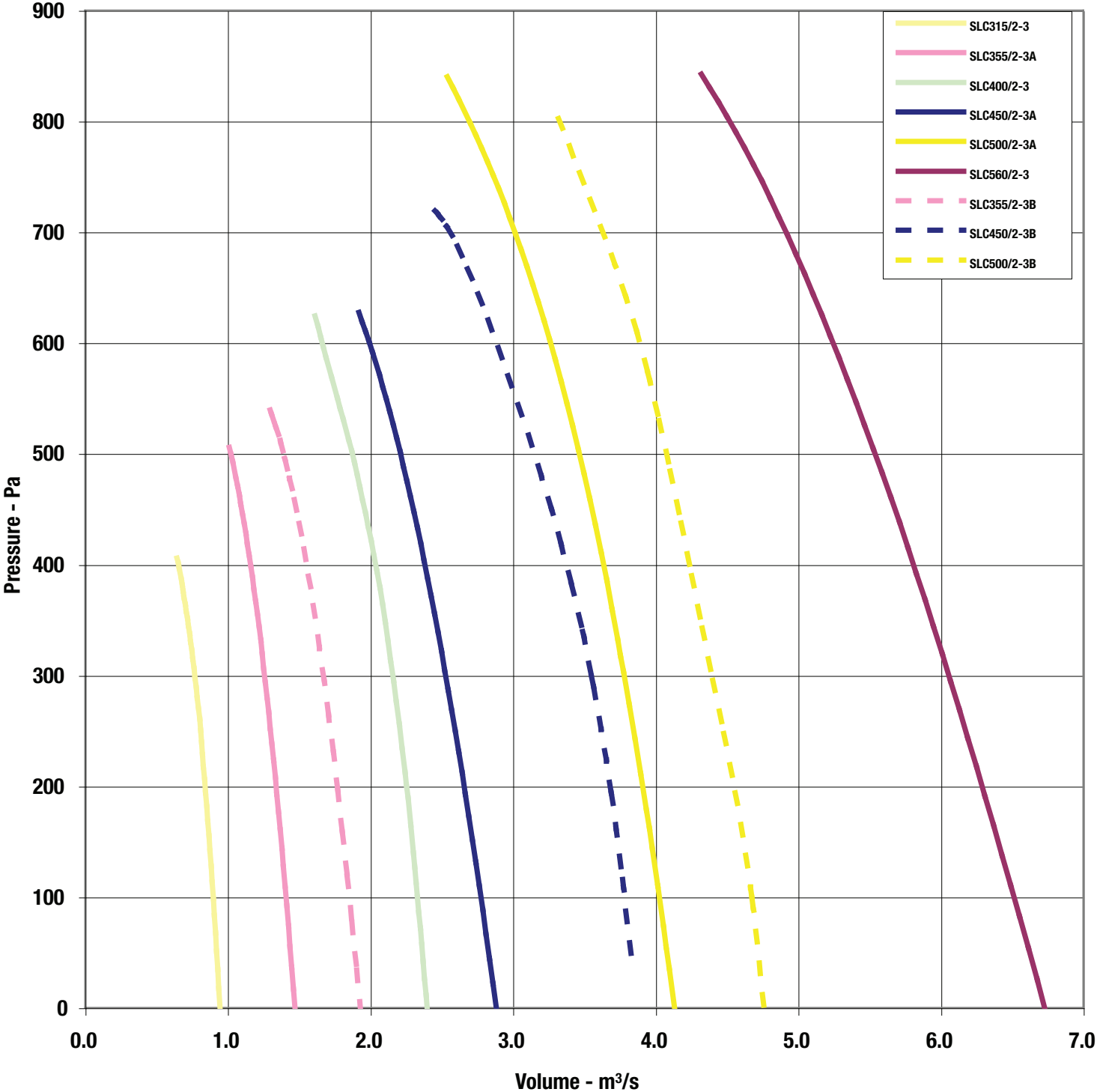
2 Pole 1Ph Range



Revolution SLC - Long Cased Performance Curves



2 Pole 3Ph Range

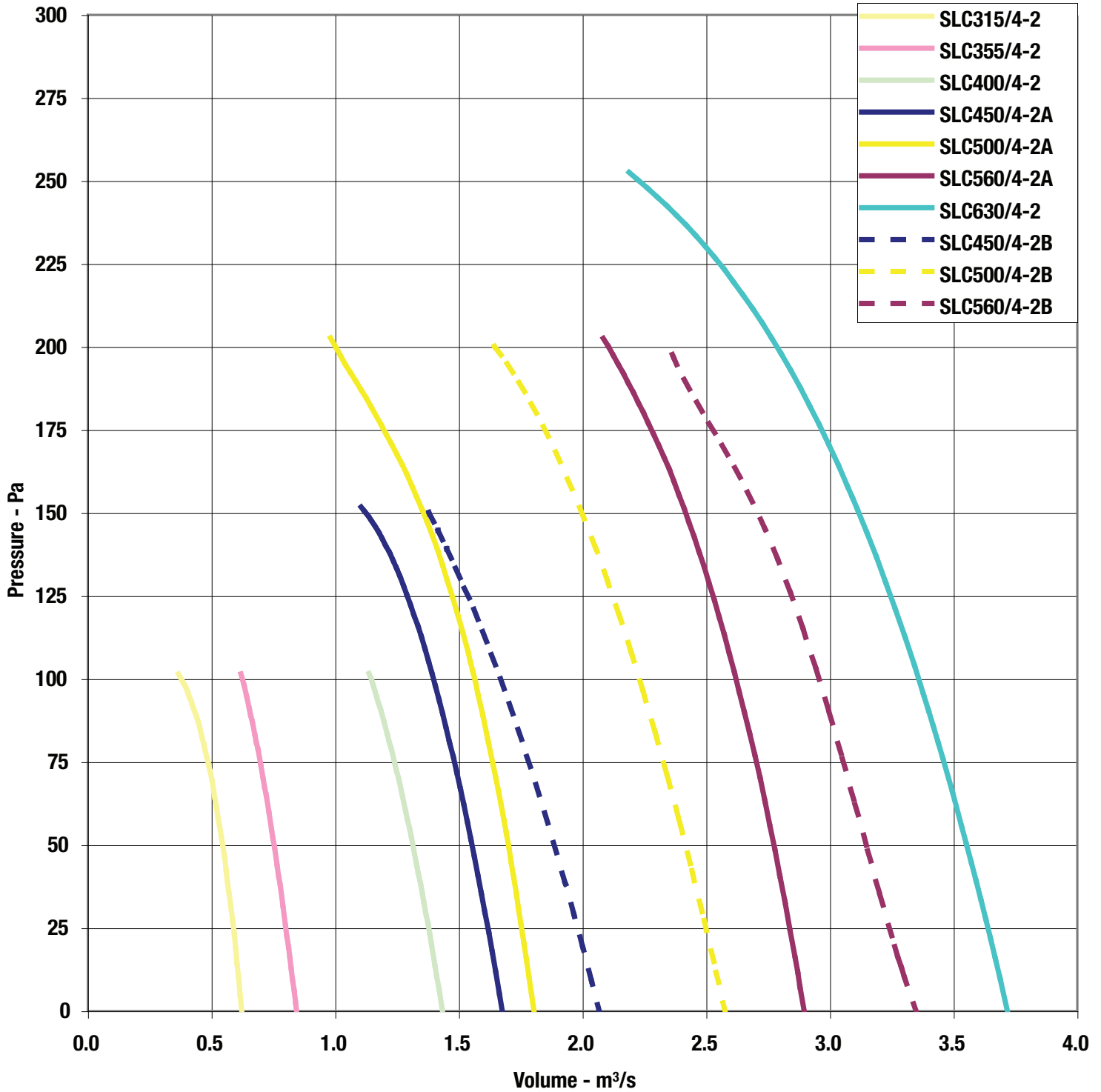


Revolution SLC - Long Cased

Performance Curves



4 Pole 1Ph Range

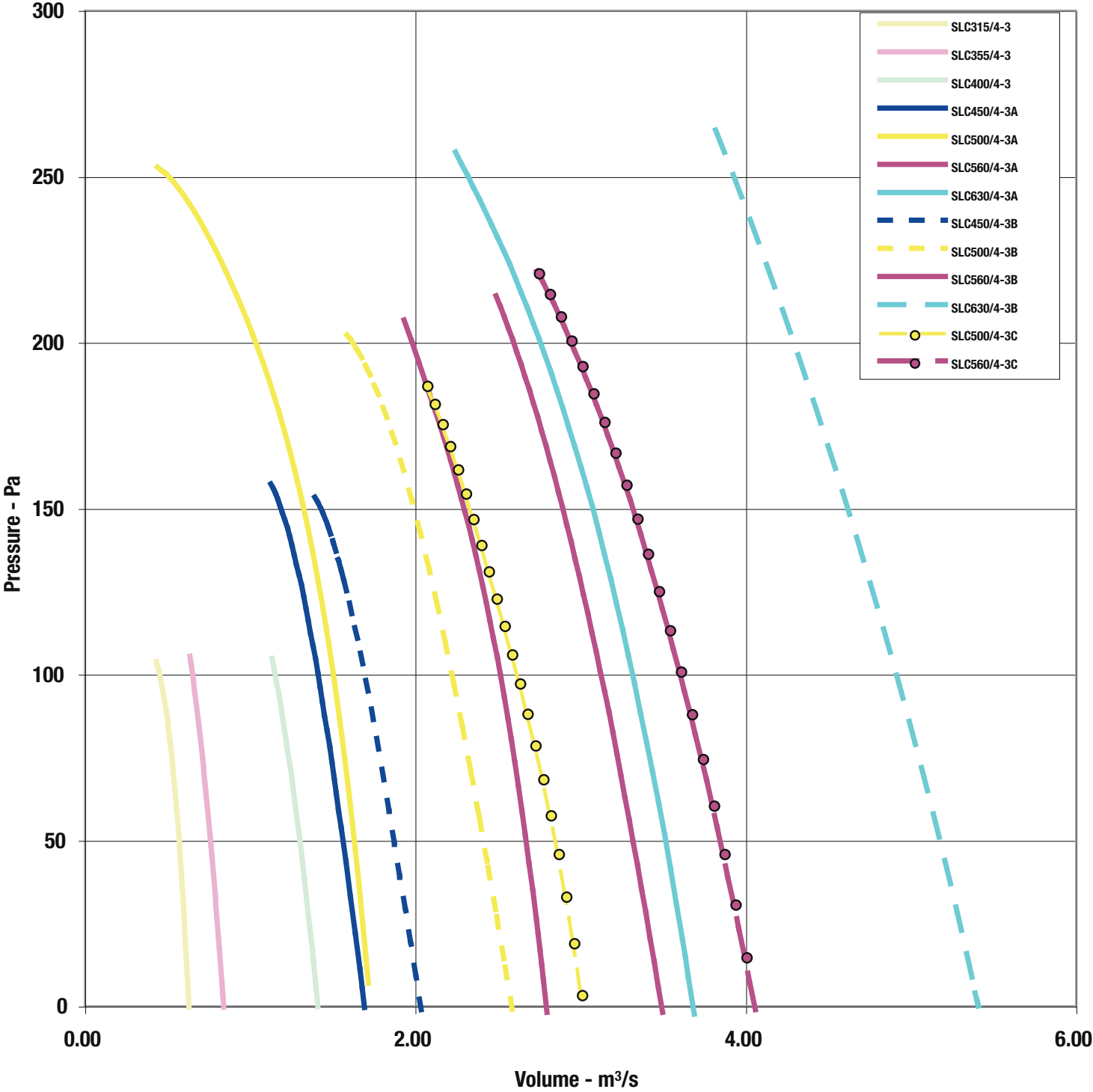


Revolution SLC - Long Cased

Performance Curves



4 Pole 3Ph Range 315-630

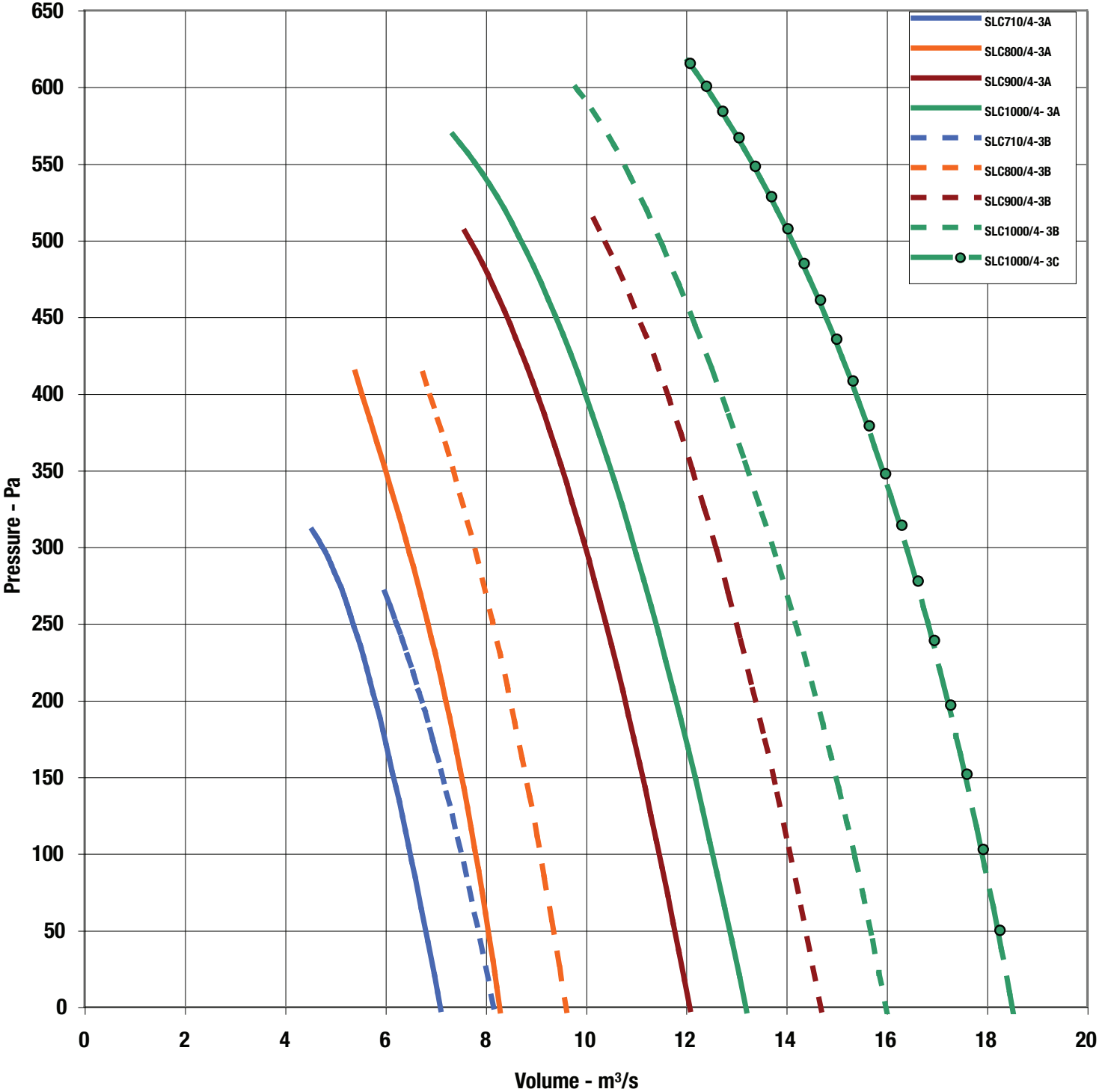


Revolution SLC - Long Cased

Performance Curves



4 Pole 1Ph Range 710-1000

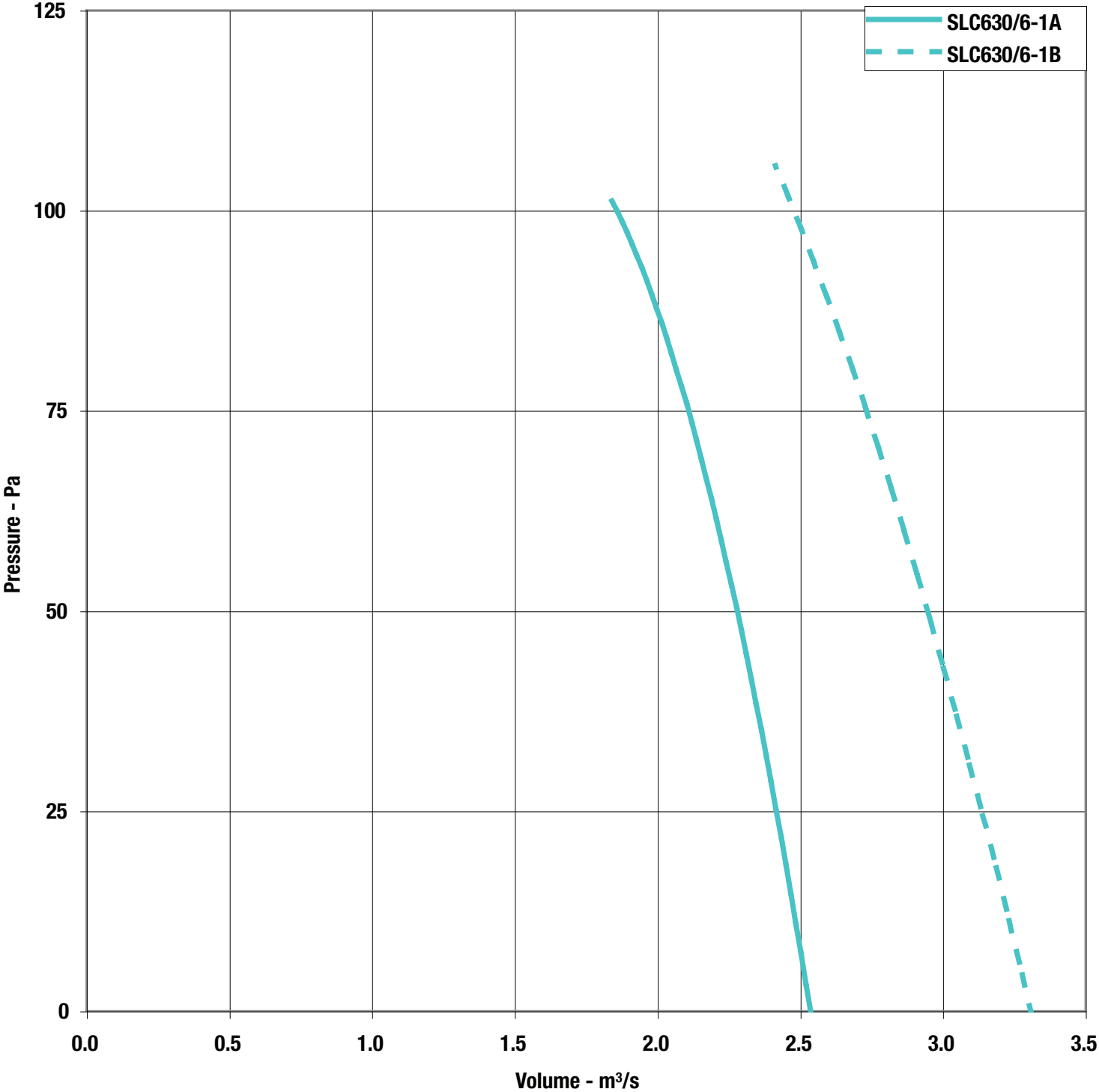


Revolution SLC - Long Cased

Performance Curves



6 Pole 1Ph Range

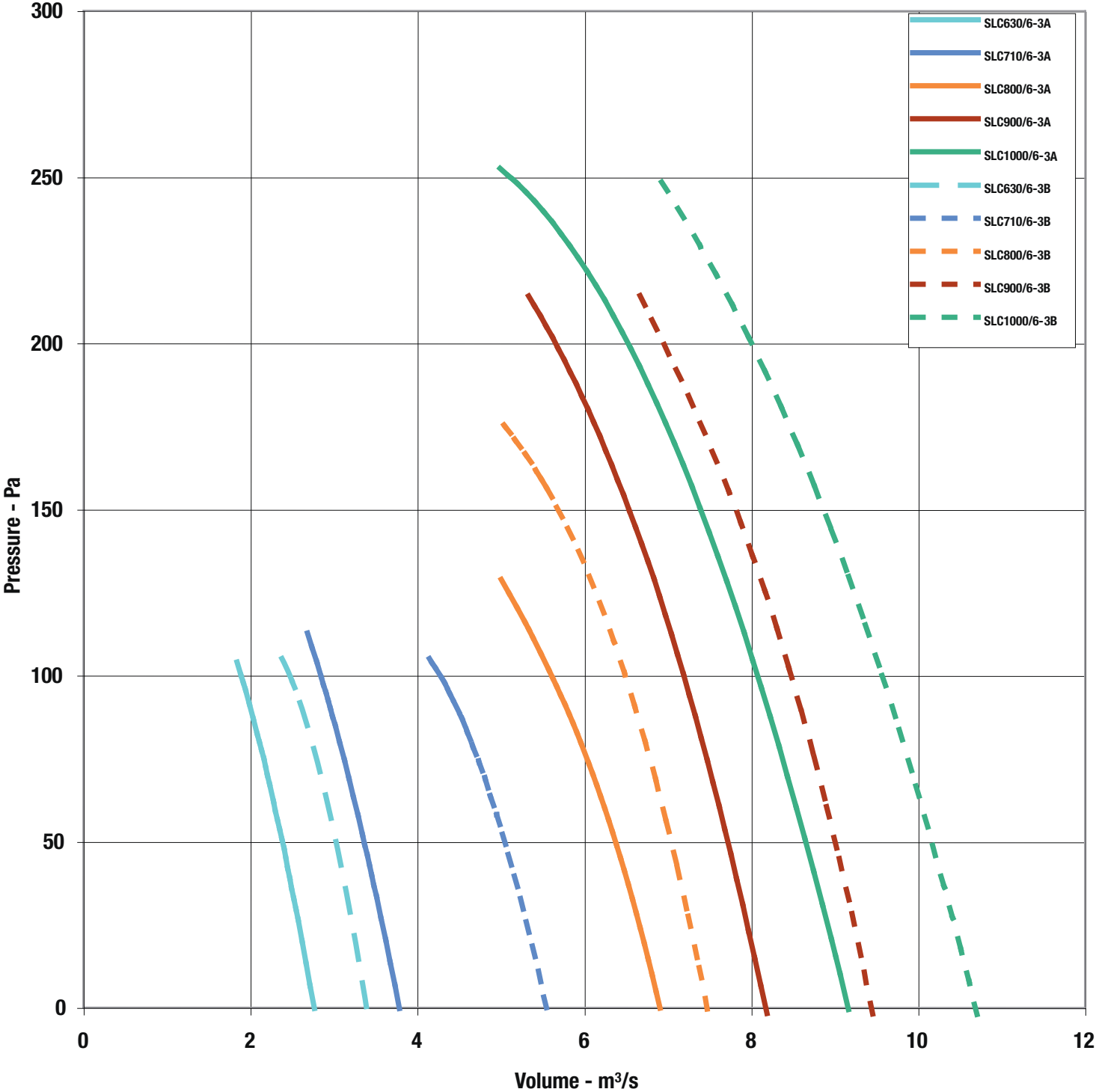


Revolution SLC - Long Cased



Performance Curves

6 Pole 3Ph Range

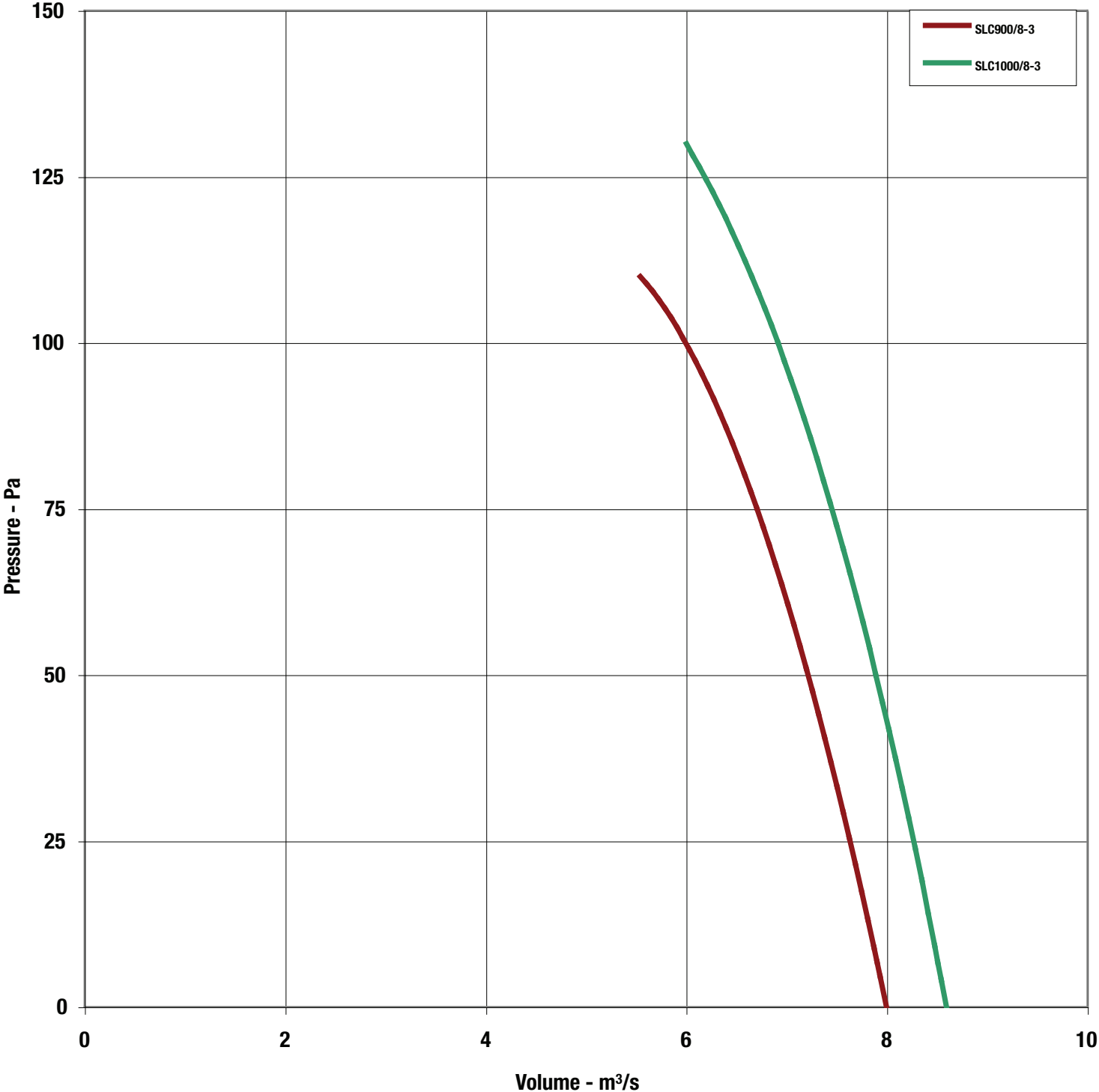


Revolution SLC - Long Cased

Performance Curves



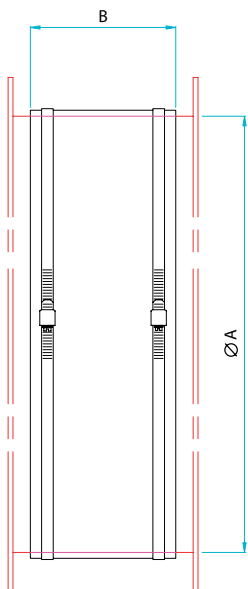
8 Pole 3Ph Range



Revolution SLC - Long Cased Accessories



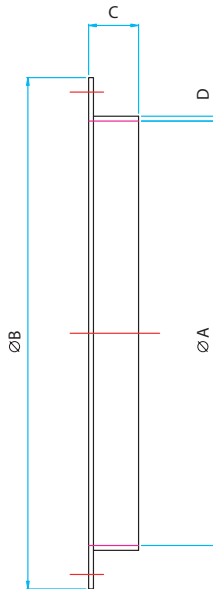
Flexible Connectors



- Fit to matching flanges to provide flexible connection
- PVC coated polyester
- Supplied with plated steel band fixings
- Alternative materials available to order

Product Code	Fan Dia. A	B	Weight kg
063-0315-MAN150	315	150	0.6
063-0355-MAN150	355	150	0.7
063-0400-MAN150	400	150	0.9
063-0450-MAN150	450	150	1.1
063-0500-MAN150	500	150	1.2
063-0560-MAN150	560	150	1.3
063-0630-MAN200	630	200	1.4
063-0710-MAN200	710	200	2.0
063-0800-MAN200	800	200	2.3
063-0900-MAN200	900	200	2.7
063-1000-MAN250	1000	250	3.0

Matching Flanges

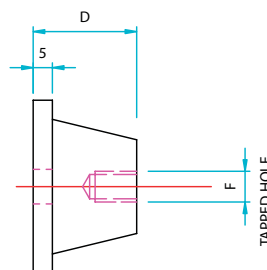
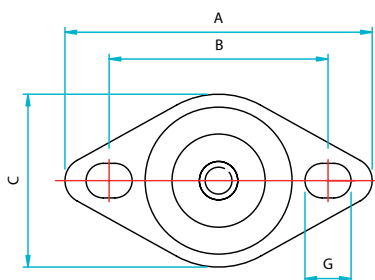


- Fit directly to fan case flange
- Provides easy connection to flexible connector or ducting
- Hot dipped galvanised steel

Product Code	Fan Dia. A	B	C	D	Weight kg
061B-0315	315	375	30	1.5	0.7
061B-0355	355	425	40	1.5	0.9
061B-0400	400	475	40	1.5	1.2
061B-0450	450	530	40	1.5	2.2
061B-0500	500	585	45	2.0	2.6
061B-0560	560	645	45	2.0	3.0
061B-0630	630	715	45	2.0	3.5
061B-0710	710	795	45	2.0	3.7
061B-0800	800	885	50	2.5	5.0
061B-0900	900	1000	50	2.5	5.5
061B-1000	1000	1110	50	2.5	6.5

AXIAL FLOW

Anti-Vibration Mounts



Product Code	A	B	C	D	E	F	G	Weight kg
062-S1G	64	50	43	5.5	20	M6	Ø7	0.040
062-S2								0.100
062-S2B	80	57	45	5	32	M8	12 x 9	0.100
062-S2Y								0.102
062-S3B	95	71	60	5	45	M10	14 x 9	0.104

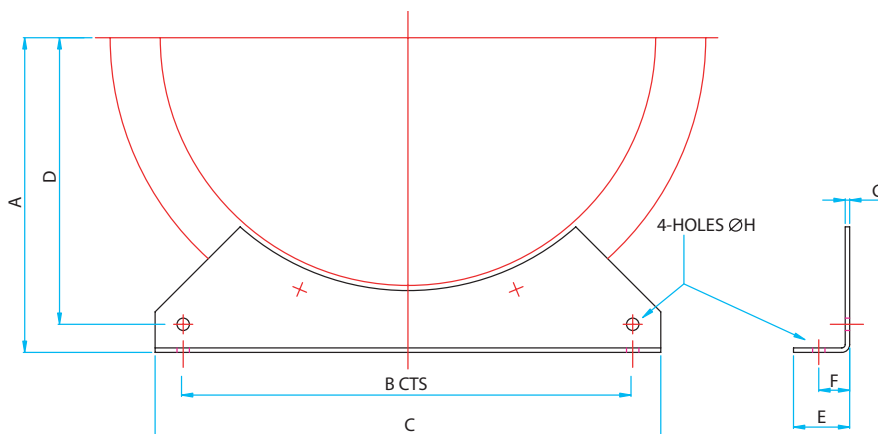
- Fit directly to mounting feet
- Rubber with steel insert
- Supplied as set of 4, complete with fixings

Revolution SLC - Long Cased Accessories



Mounting Feet

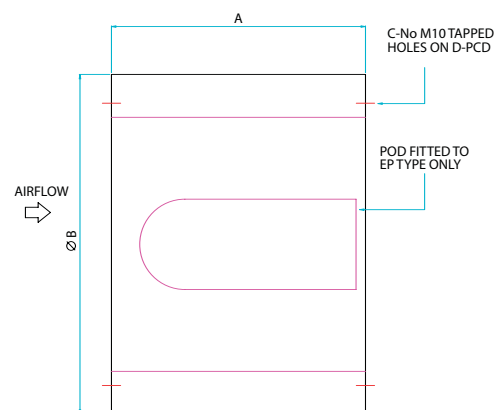
AXIAL FLOW



Product Code	Fan Dia.	A	B	C	D	E	F	G	H	Weight kg
060B-0315	315	200	265	315	180	40	23	3	9	1.0
060B-0355	355	230	300	350	210	40	23	3	9	1.3
060B-0400	400	250	350	400	230	50	27.5	4	9	1.5
060B-0450	450	280	400	450	255	50	27.5	4	11	2.0
060B-0500	500	315	450	500	290	50	27.5	4	11	2.5
060B-0560	560	355	510	560	330	60	32	5	11	4.0
060B-0630	630	400	580	630	375	60	32	5	11	5.0
060B-0710	710	450	660	710	425	60	32	5	11	5.5
060B-0800	800	500	750	800	475	60	32	5	11	6.0
060B-0900	900	560	850	900	530	70	36	6	11	9.0
060B-1000	1000	630	950	1000	595	70	36	6	13	12.0

- For free standing mounting of ducted fans
- Fixes directly to fan case flange
- Hot dipped galvanised steel

Silencers



Product Code	Fan Dia.	A 1D	A 2D	B	C	D	E	Weight kg			
								1DENP	1DEP	2DENP	2DEP
068-0315-*D**P	315	315	630	417	8	M8	355	9	11	15	17
068-0355-*D**P	355	350	700	452	8	M8	395	11	13	18	21
068-0400-*D**P	400	400	800	500	8	M10	450	13	16	22	26
068-0450-*D**P	450	450	900	602	8	M10	500	15	18	27	31
068-0500-*D**P	500	500	1000	652	12	M10	560	18	22	32	37
068-0560-*D**P	560	560	1120	712	12	M10	620	22	26	39	46
068-0630-*D**P	630	630	1260	782	12	M10	690	26	32	48	57
068-0710-*D**P	710	710	1420	862	16	M10	770	32	39	59	71
068-0800-*D**P	800	800	1600	952	16	M10	860	40	49	74	90
068-0900-*D**P	900	900	1800	1102	16	M12	970	55	67	102	123
068-1000-*D**P	1000	1000	2000	1202	16	M12	1070	66	82	124	151

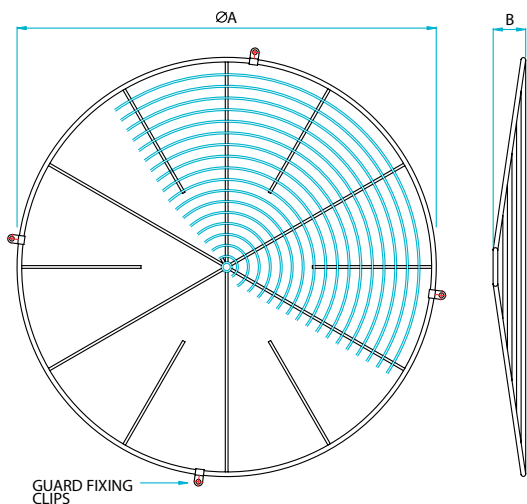
- For information on silencers and an explanation of the data, see p20
- Pre-galvanised sheet steel with perforated steel lining
- Infill of glass tissue faced high density mineral wool
- For saturated or other special applications please refer to Elta

1 or 2 SEE DIM 'A' → E = WITH POD or EN = WITHOUT POD

Revolution SLC - Long Cased Accessories



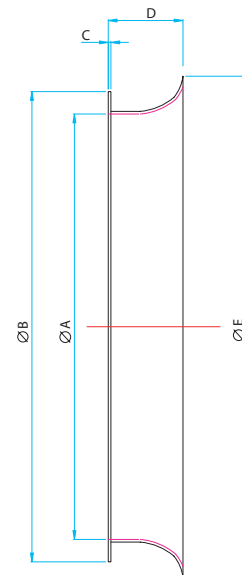
Impeller Guards



Product Code	Fan Dia.	A	B	Weight kg
078C-0315-C	315	335	21	1.1
078C-0355-C	350	370	23	1.4
078C-0400-C	400	420	26	1.6
078C-0450-C	450	470	29	1.8
078C-0500-C	500	520	32	2.2
078C-0560-C	560	585	32	2.5
078C-0630-C	630	655	40	2.6
078C-0710-C	710	730	50	3.2
078C-0800-C	800	820	50	3.5
078C-0900-C	900	920	60	4.0
078C-1000-C	1000	1020	60	4.5

- Bright zinc plated steel
- Fix with clips & screws provided

Bell Mouth Inlets

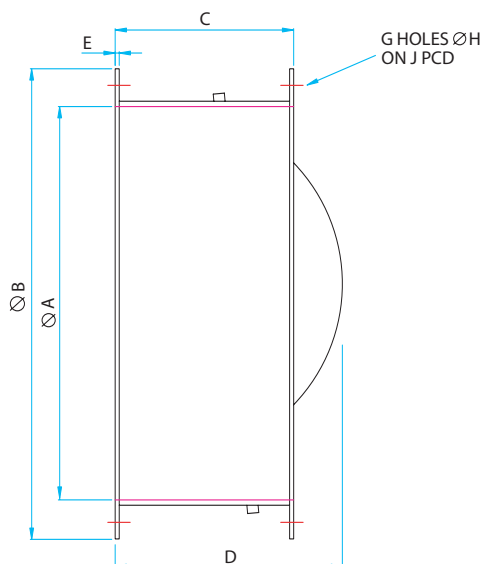


- For improved airflow in end of duct applications
- Fixed directly to fan case flange
- Hot dipped galvanised steel
- Available to order

Product Code	Fan Dia. A	B	C	D	E	Weight kg
241B-0315*	315	380	3	58	395	2.5
241B-0355-BELL	350	425	3	65	450	3.0
241B-0400-BELL	400	485	3	75	515	4.5
241B-0450-BELL	450	535	3	85	570	5.3
241B-0500-BELL	500	585	3	93	630	6.2
241B-0560-BELL	560	645	3	105	700	7.5
241B-0630-BELL	630	715	3	105	780	9.0
241B-0710-BELL	710	795	3	120	870	11.1
241B-0800-BELL	800	885	3	135	970	13.0
241B-0900-BELL	900	1005	3	150	1090	17.3
241B-1000-BELL	1000	1110	3	165	1200	20.0

* Inlet cone

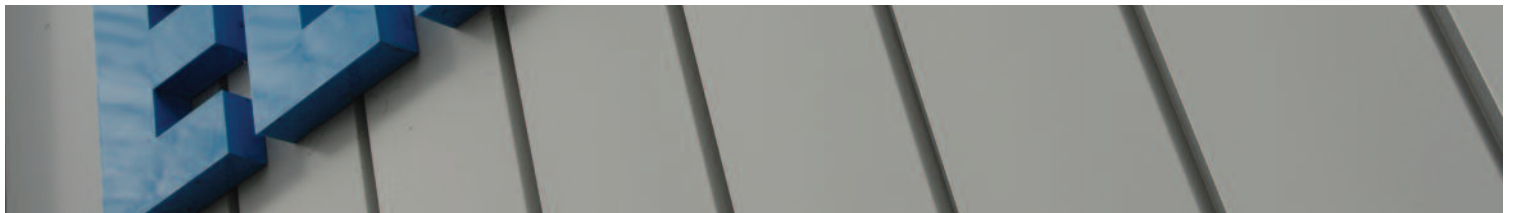
Non Return Dampers



Product Code	Fan Dia. A	B	C	D	E	G	H	J	Weight kg
019-0315-STD	315	375	180	210	2.0	8	10	355	7.5
019-0350-STD	350	425	185	235	3.0	8	10	395	8.0
019-0400-STD	400	475	220	270	3.0	8	12	450	9.0
019-0450-STD	450	530	220	280	3.0	8	12	500	12.0
019-0500-STD	500	585	220	315	3.0	12	12	560	18.0
019-0560-STD	560	645	220	375	3.0	12	12	620	21.0
019-0630-STD	630	715	250	450	3.0	12	12	690	25.0
019-0710-STD	710	795	250	740	3.0	16	12	770	29.0
019-0800-STD	800	885	300	525	3.0	16	12	860	34.0
019-0900-STD	900	1000	300	590	4.0	16	15	970	59.0
019-1000-STD	1000	1100	420	646	4.0	16	15	1070	85.5

- Prevents reverse flow of air when fan not operating
- Fixed directly to fan case flange
- Hot dipped galvanised steel
- Galvanised steel butterfly type blades
- Suitable for horizontal or vertical (upward airflow) mounting
- Available to order

AXIAL FLOW



Elta Fans Ltd - Applied Technology

17 Barnes Wallis Road,
Segensworth East Industrial Estate,
Fareham, Hampshire, P015 5ST, United Kingdom.

Visit: eltafans.com

e-mail: mailbox@eltafans.co.uk

Applied Technology:

Tel: +44 (0) 1489 566500

Fax: +44 (0) 1489 566555

Building Services:

Tel: +44 (0) 1384 275800

Fax: +44 (0) 1384 275810

Export:

Tel: +44 (0) 1489 566500

Fax: +44 (0) 1489 566555