

QUIET *Flow*
SQT



Twin In-Line Fans

Quietflow SQT - Twin In-Line

Features & Benefits



The Quietflow SQT is a range of acoustically treated in-line centrifugal twin fans for internal mounting, manufactured in galvanised steel with a natural finish. These compact units are designed to overcome space restrictions in buildings with low ceiling voids, whilst also providing exceptional sound characteristics when fans are close to building occupants

- Air volume flow rates of up to 1.3 m³/sec
- Static pressures of up to 400 Pa.
- 7 sizes – 125mm up to 500mm.
- Robust sheet steel casing.
- Highly efficient forward curved centrifugal fan.
- Single speed motor.
- External rotor or induction motor.
- Suitable for operating temperatures of up to 40° C.
- In built vibration isolation.
- Lower noise levels.

Features & Benefits

Material Strength - A robust, lightweight unit with a galvanised sheet steel casing which is lined with flame retardant acoustic lining for much improved sound characteristics.

Reliability – Motors have sealed for life bearings.

Efficiency – SQT twin fan units are fitted with a non return shutter which means the elimination of short circuiting within the casing to give a more efficient unit.

Low profile - Casings have a low profile design which allows ease of fitting into roof spaces.

Ease of maintenance – Complete with remote fail indicator.

Low noise - Twin fans are acoustically lined so breakout noise levels are significantly lowered and provide quiet performance to meet environmental requirements.

Quality impellers – The forward curved centrifugal impellers are directly driven by an external rotor or induction motor, mounted on anti-vibration mounts fitted between the motor mounting and the fan casing, designed to provide reliable, continuous air extraction with a smooth airflow.

Easy access - There is access to the fan via screws on the lid which means easy access for cleaning and maintenance.

Ease of installation – All models are designed for direct connection to standard diameter flexible or rigid circular ducting with 50mm long spigots for ease of connection.

Motor protection – All SQT units have integral thermal overload protection which prevents the motor from overheating.

Mounting - Mounting brackets are supplied fixed to the sides of the casing for ease of installation.

Space saving - The impeller axis runs horizontally across the unit which minimises the overall height of the unit and enables it to be fitted into roof voids.

Tested to the very latest standards – SQT units are tested to ISO 5801:1997 (airside performance) and to BS 848 Pt 2:1985 (sound performance) meaning accurate, up-to-date information on performance and noise data that can be relied upon.

Quality assurance – All units are designed and manufactured with procedures as defined in BS EN ISO 9001: 2000.

Warranty – Each SQT has a 12 month warranty.

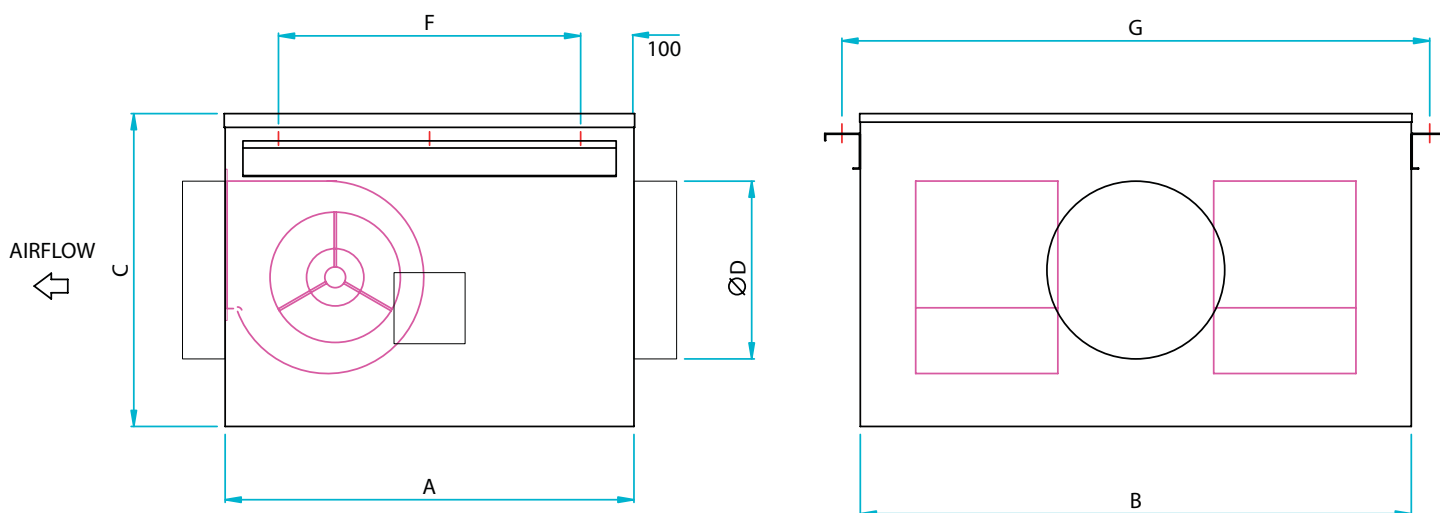
Full accessory range - Speed controllers, fast clamps, anti-vibration mounts, silencers, panel filters, flexible connectors and auto-changeover panels.

Applications

Bathroom and kitchen extract in apartments, hotels, residential properties, libraries and offices.

Quietflow SQT - Twin In-Line

Dimensional Data



Product Code	A	B	C	D	F	G	Weight kg
SQT125-L	425	530	210	125	225	580	16
SQT150-L	525	740	260	150	325	790	26
SQT200-L	525	740	260	200	325	790	26
SQT250-L	550	800	300	250	350	850	30
SQT315-L	800	1000	440	315	600	1050	73
SQT315-22L	800	1000	440	315	600	1050	73
SQT400-L	800	1100	460	400	600	1150	82
SQT500-L	1000	1250	575	500	800	1300	113

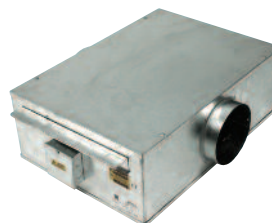
CENTRIFUGAL

Accessories



Quietflow SQT - Twin In-Line

Performance & Electrical Data



SINGLE Phase - 220V-240V / 50Hz

Product Code	Speed r/min	Airflow m ³ /s @ Static Pressure Pa.											Motor Electrical Data*			Sound Level dBA @ 3m	Breakout Sound Level dBA @ 3m
		0	25	50	75	100	150	200	250	300	350	400	FLC Amps	SC Amps	Input Watts		
SQT125-L	1700	0.063	0.060	0.057	0.054	0.051	0.044	0.037	0.029				0.47	1.41	0.095	28	25
SQT150-L	1650	0.148	0.144	0.138	0.133	0.128	0.117	0.102	0.087	0.061			0.82	2.60	0.160	30	28
SQT200-L	1750	0.160	0.157	0.153	0.149	0.145	0.135	0.123	0.104	0.070			0.82	2.60	0.185	35	31
SQT250-L	1450	0.215	0.208	0.202	0.195	0.188	0.172	0.155	0.138	0.118	0.090	0.030	0.95	2.90	0.220	36	34
SQT315-22L	1350	0.583	0.572	0.555	0.534	0.506	0.43	0.27	0.063				3.10	9.00	0.650	48	42
SQT315-L	1300	0.700	0.690	0.670	0.650	0.640	0.600	0.560	0.510	0.430	0.320	0.110	3.70	11.0	0.840	48	41
SQT400-L	1360	0.870	0.840	0.820	0.800	0.770	0.720	0.650	0.570	0.400	0.220	0.080	6.50	14.5	1.000	52	46
SQT500-L	890	1.300	1.270	1.240	1.210	1.160	1.090	0.980	0.840	0.550	0.080		8.10	17.8	1.200	50	44

Sound levels are average spherical free field values at 50% peak pressure for comparative purposes only.

* Maximum electrical data applicable to free air delivery. All data at 230V.

Motors wound for 220-240V/1Ph/60Hz supply are available upon request - Contact Elta Fans for these requirements.

Silencer Data

Product Code	dBA Attenuation			
	300L	600L	900L	1200L
SQT125-L	-7	-12	-17	-20
SQT150-L	-8	-12	-16	-19
SQT200-L	-7	-10	-14	-17
SQT250-L	-7	-11	-13	-15
SQT315-22L	-7	-9	-11	-13
SQT315-L	-6	-9	-10	-13
SQT400-L	-6	-8	-10	-13
SQT500-L	-	-	-	-

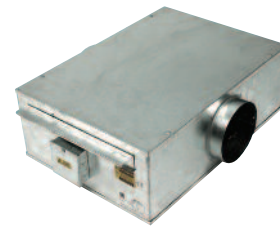
* For SQT500-L silencer data contact Elta Fans.

Anti-Vibration Mounts

Product Code	A.V. Mounts
SQT125-L	SEL03
SQT150-L	SEL03
SQT200-L	SEL03
SQT250-L	SEL03
SQT315-22L	SEL04
SQT315-L	SEL04
SQT400-L	SEL05
SQT500-L*	SEL05

Quietflow SQT - Twin In-Line

Sound Data



SQT - SINGLE Phase

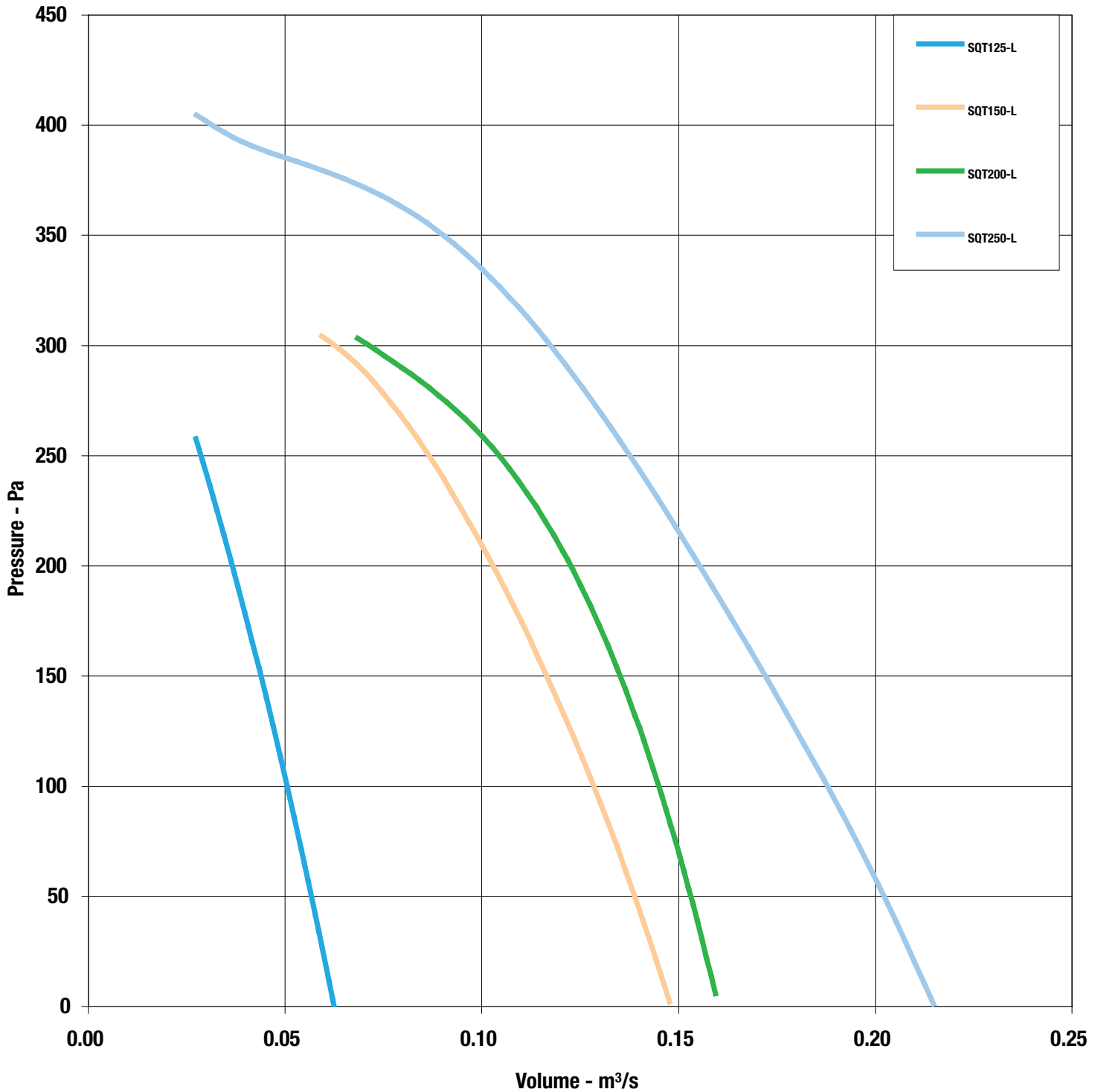
Product Code	63Hz	125Hz	250Hz	500Hz	1kHz	2kHz	4kHz	8kHz	dBA @ 3m
SQT125-L	58	57	54	44	39	34	32	26	28
SQT150-L	64	56	51	48	45	40	36	32	30
SQT200-L	68	63	58	54	47	42	41	37	35
SQT250-L	69	64	57	55	48	46	43	39	36
SQT315-22L	84	76	70	64	61	59	58	50	48
SQT315-L	84	76	70	64	61	59	58	50	48
SQT400-L	84	80	74	66	64	65	64	56	52
SQT500-L	81	77	71	64	63	64	61	53	50

Quietflow SQT - Twin In-Line

Performance Curves



SQT125 - SQT250

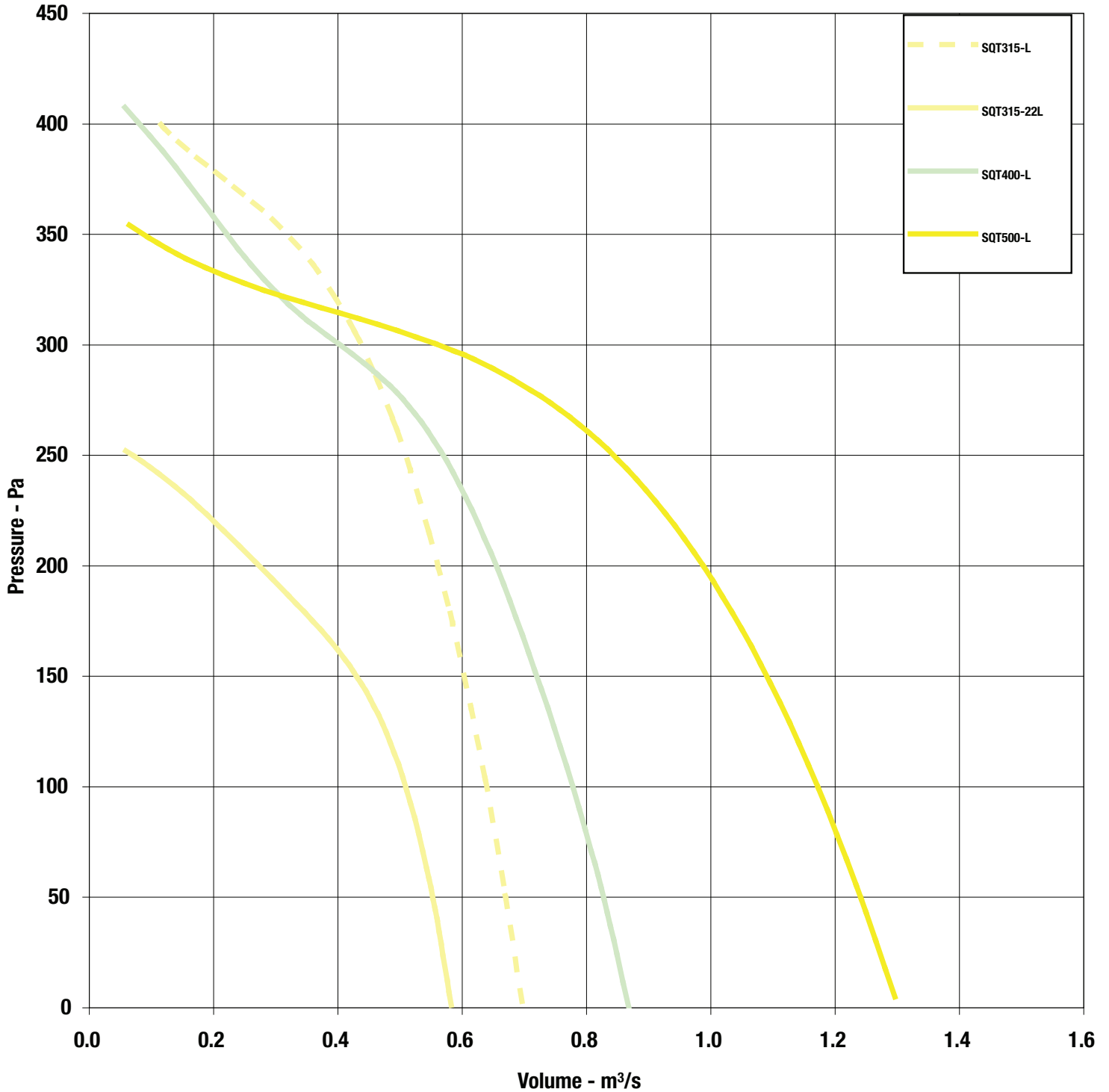


Quietflow SQT - Twin In-Line

Performance Curves



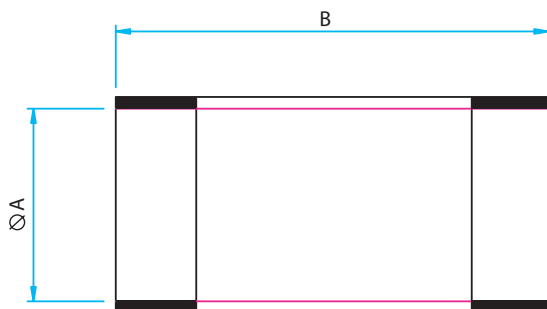
SQT315 - SQT500



Quietflow SQT - Twin In-Line Accessories



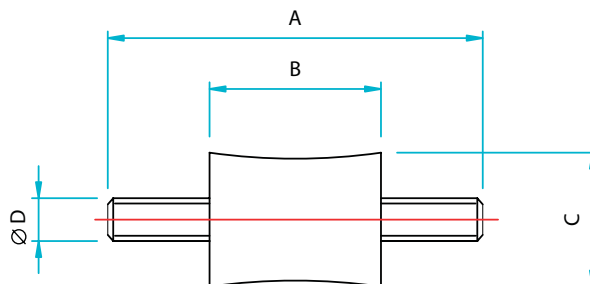
Flexible Connectors



- Fix directly onto spigot
- Provides flexible connection between fan and accessory or duct
- PVC coated polyester with galvanised sheet steel

Product Code	Fan Dia. A	B	Weight kg
018-0125-FLEX	125	150	0.2
018-0150-FLEX	150	150	0.2
018-0200-FLEX	200	150	0.3
018-0250-FLEX	250	150	0.4
018-0315-FLEX	315	150	0.5
018-0400-FLEX	400	150	0.7
018-0500-FLEX	500	150	1.0

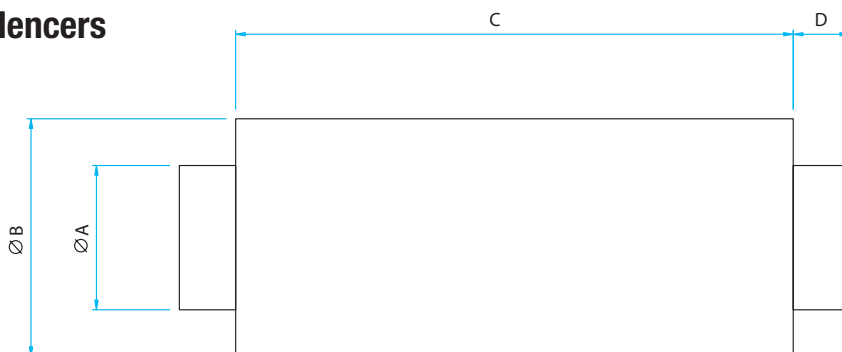
Anti-Vibration Mounts



- Fit directly to fan
- Rubber with steel insert
- Supplied as set of 4, complete with fixings

Product Code	A	B	C	D	Weight kg (Per Set)
062-SEL01	45	19	13	M5	0.044
062-SEL02	40	15	15	M5	0.052
062-SEL03	70	32	25	M8	0.210
062-SEL04	60	20	25	M8	0.186
062-SEL05	60	20	25	M8	0.187

Silencers



- For information on silencers and an explanation of the data, see p74
- Pre-galvanised sheet steel with perforated steel lining
- Infill of glass tissue faced high density mineral wool
- For saturated or other special applications please refer to Elta Fans

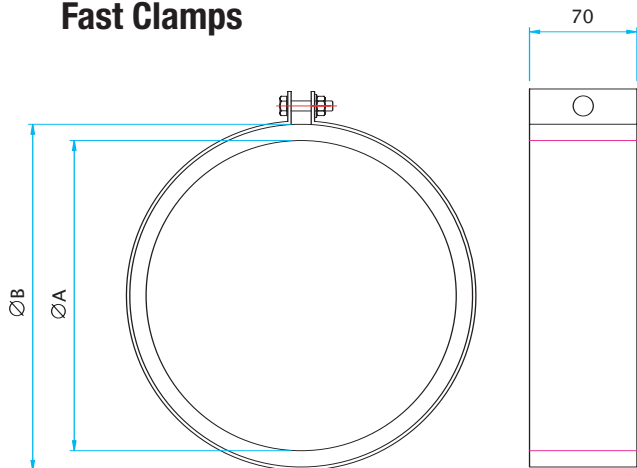
Product Code	Fan Dia.	A	B	C 1	C 2	C 3	C 4	D	Weight kg			
									1	2	3	4
068-0125-JF*	125	123	230	300	600	900	1200	40	2.9	5.4	7.8	10.2
068-0150-JF*	150	148	255						3.4	6.1	8.9	11.6
068-0200-JF*	200	198	305						4.2	7.6	11.0	14.5
068-0250-JF*	250	248	355						5.0	9.1	13.2	17.3
068-0315-JF*	315	313	420						6.1	11.1	16.1	21.0
068-0400-JF*	400	398	505						7.5	13.6	19.8	25.9

* Add 1, 2, 3 or 4 depending on length required.
For SQT500-L silencer selection contact Elta Fans.

Quietflow SQT - Twin In-Line Accessories



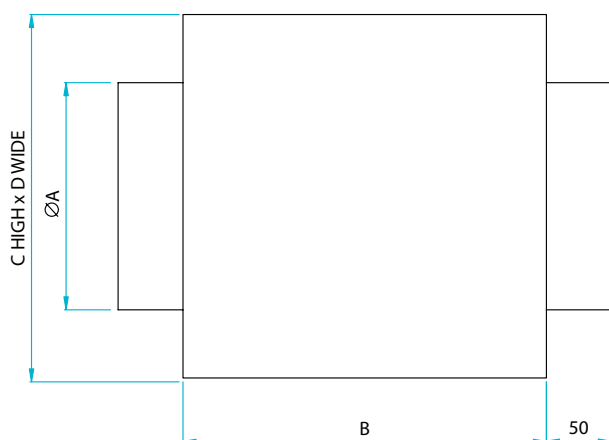
Fast Clamps



Product Code	Fan Size	A	B	Weight kg
018-125-CLAMP	125	117	141	0.29
018-150-CLAMP	150	142	166	0.33
018-200-CLAMP	200	192	216	0.42
018-250-CLAMP	250	242	266	0.49
018-315-CLAMP	315	307	331	0.59
018-400-CLAMP	400	392	416	0.74
018-500-CLAMP	500	492	516	0.87

- For quick connection of spigotted fans to circular duct or accessories
- Galvanised steel circular duct clamp with foam lining

Panel Filters



- Galvanised steel casing
- Filter media to BS EN 779 rating G3 with 85% arrestance
- Filter access with removable panel

Product Code	Fan Dia. A	B	C	D	Weight kg
018-0125-FILT-P	125	155	200	200	2
018-0150-FILT-P	150	155	250	250	2
018-0200-FILT-P	200	155	250	250	2
018-0250-FILT-P	250	200	300	300	3
018-0315-FILT-P	315	300	440	440	8
018-0400-FILT-P	400	400	440	440	8
018-0500-FILT-P	500	500	550	550	11

CENTRIFUGAL



Elta Fans Ltd - Applied Technology

17 Barnes Wallis Road,
Segensworth East Industrial Estate,
Fareham, Hampshire, P015 5ST, United Kingdom.

Visit: eltafans.com

e-mail: mailbox@eltafans.co.uk

Applied Technology:

Tel: +44 (0) 1489 566500

Fax: +44 (0) 1489 566555

Building Services:

Tel: +44 (0) 1384 275800

Fax: +44 (0) 1384 275810

Export:

Tel: +44 (0) 1489 566500

Fax: +44 (0) 1489 566555