

JM Plate Mounted Axial Plate Fans

- 315mm - 630mm diameter
- Volume flow up to 4.08m³/s
- Static pressures up to 175 Pa
- Motor protection IP55
- Speed controllable
- Supplied fully assembled
- Full range of accessories
- Inverter speed controllable
- Overheat protection fitted as standard on single phase motors

Sizes

31JMP - (315mm) to 63JMP - (630mm).

Fan Performance

Coupled with the above fan diameters the speed controllable motor allows the exact performance required to be obtained.

Impellers

A unique high efficiency aerofoil section blade. The Fläkt Woods impellers are all high pressure die cast to offer thin aerofoil sections for low generation of noise.

Every cast aluminium component is X-ray examined using Real Time Radiography inspection prior to assembly. The maximum pitch angles shown allow for speed control by frequency inverter.

Motors

All motors are totally enclosed airstream rated class F insulation. Constructed from aluminium as standard with special 'T' slot fixings. Suitable for horizontal through to vertical shaft operation.

Supplied IP55 with removable drain plugs.

These motors are suitable for inverter speed control down to 20% of full speed.

Electrical Supply

220 - 240V / 50Hz / 1 ϕ

380 - 420V / 50Hz / 3 ϕ

Temperature Range

-40°C to 50°C as standard.

Fans can be continuously operated at temperatures up to 70°C. Whilst these fans are operating in excess of 50°C fans should be run at full speed only.

Plates

Manufactured from mild steel with powder coat finish, fans are supplied as standard with motor side guard.

Accessories

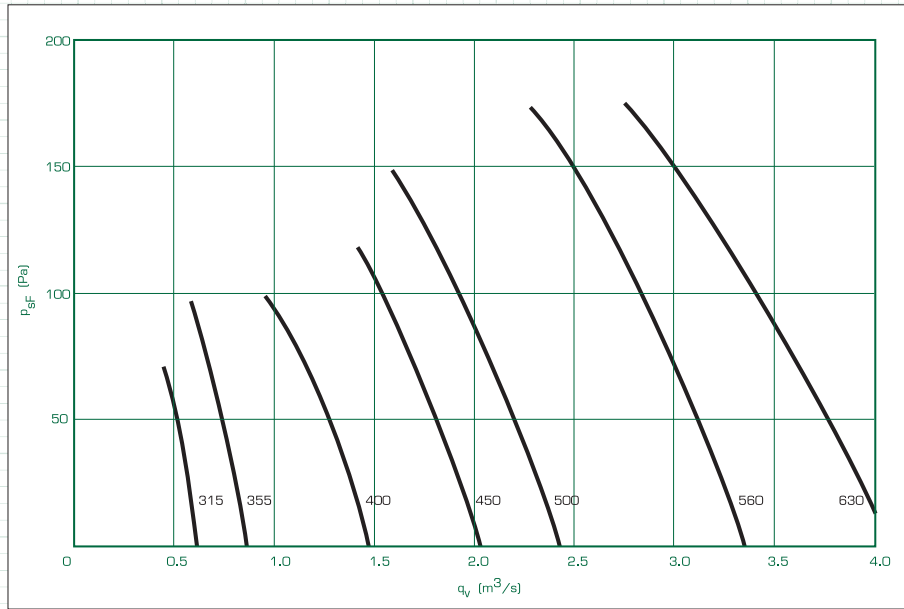
Louvre shutter, Motor side guard, Bell mouth inlet and Electronic transformer and inverter type speed controllers. For a full range of accessories please see page 104.



Application Guide



Performance Data



Electrical Data

Product Code	Speed rev/min	Motor	Product Number	220-240V/50Hz/1 ϕ							Sound Level dBA	m ³ /s at Pa (Static)						
				Pitch Angle	Motor Rating (kW)	Full Load Current (at 230V) (A)	Starting Current (at 230V) (A)	Wiring Diagram Ref	Speed Controller			25	50	75	100	125	150	175
									Electronic	Transformer								
31JMP/16/4/5/...	1420	BT4	DT315410	40	0.095	0.8	1.3	CDW210D	ME1.3	MT1.5	45	0.58	0.51	0.44				
35JMP/16/4/5/...	1440	BT4	DT355410	34	0.13	1.05	1.75	CDW210D	ME1.3	MT1.5	47	0.79	0.72	0.65				
40JMP/16/4/5/...	1440	BT9	DT405410	40	0.32	2.2	5.0	CDW210D	ME1.3	MT1.5	54	1.39	1.29	1.17	0.9			
45JMP/16/4/5/...	1440	CT5	DT455410	40	0.52	3.9	7.8	CDW210D	ME1.6	MT1.5	58	1.95	1.82	1.69	1.55	1.36		
50JMP/16/4/5/...	1440	CT5	DT505410	30	0.52	3.9	7.8	CDW210D	ME1.6	MT1.5	58	2.32	2.2	2.06	1.92	1.75		
56JMP/16/4/5/...	1440	CT9	DT565411	30	0.97	6.9	13.5	CDW210D	ME1.6	MT1.8	61	3.2	3.08	2.95	2.8	2.65	2.47	2.27
63JMP/20/4/3/...	1420	CT9	DT635411	24	0.97	6.9	13.5	CDW210D	ME1.6	MT1.8	64	3.93	3.78	3.6	3.41	3.25	3	2.7

Product Code	Speed rev/min	Motor	Product Number	380-420V/50Hz/3 ϕ							Sound Level dBA	m ³ /s at Pa (Static)						
				Pitch Angle	Motor Rating (kW)	Full Load Current (at 400V) (A)	Starting Current (at 400V) (A)	Wiring Diagram Ref	Speed Controller			25	50	75	100	125	150	175
									Transformer	Inverter								
45JMP/16/4/5/...	1440	CT5	DT455430	40	0.54	1.8	4.9	CD2410	MT3.2	FWX1	58	1.89	1.82	1.69	1.55	1.4		
50JMP/16/4/5/...	1440	CT5	DT505430	30	0.54	1.8	4.9	CD2410	MT3.2	FWX1	58	2.32	2.2	2.06	1.92	1.75		
56JMP/16/4/5/...	1440	CT9	DT565430	30	0.83	2.3	8.6	CD2410	MT3.7	FWX2	61	3.2	3.08	2.95	2.8	2.65	2.47	2.27
63JMP/20/4/3/...	1420	CT9	DT635430	24	0.83	2.3	8.6	CD2410	MT3.7	FWX2	64	3.93	3.78	3.6	3.41	3.25	3	2.7

The fan noise levels shown are for the specified operating point. When an electronic controller is incorporated, a magnetic noise (enhanced motor noise) can occur - particularly if the fan is operating at speeds well below maximum. For noise sensitive applications FWL recommend using an auto transformer speed controller. Wiring diagrams can be found on page 105.

Sound Levels

Product Code		Sound Power Levels (dB)								Sound Pressure Level dBA
		In Octave Band Centre Frequency - Hz								
		63	125	250	500	1K	2K	4K	8K	
315 mm	Inlet	57	69	63	62	59	57	53	47	45
	Outlet	64	68	64	62	59	57	55	49	45
355 mm	Inlet	61	73	67	66	63	61	57	51	47
	Outlet	68	72	68	66	63	61	59	53	47
400 mm	Inlet	63	71	71	75	71	66	62	57	54
	Outlet	76	76	72	73	69	66	63	60	54
450 mm	Inlet	67	75	75	79	75	70	66	61	58
	Outlet	80	80	76	77	74	70	67	64	58
500 mm	Inlet	70	78	78	82	78	73	69	64	58
	Outlet	83	83	79	80	76	73	70	67	58
560 mm	Inlet	74	82	82	86	82	77	73	68	61
	Outlet	87	87	83	84	80	77	74	71	61
630 mm	Inlet	78	86	86	90	86	81	77	72	64
	Outlet	91	91	87	87	84	81	78	75	64

Bold text denotes Super Express Product, next day delivery available if ordered by 4pm.

Sound pressure levels quoted are average dBA at 3m distance over a sphere, under free field conditions and are presented for comparative purposes only.

Super

 Range

Telephone:
01206 222 555

Fax:
01206 222 905

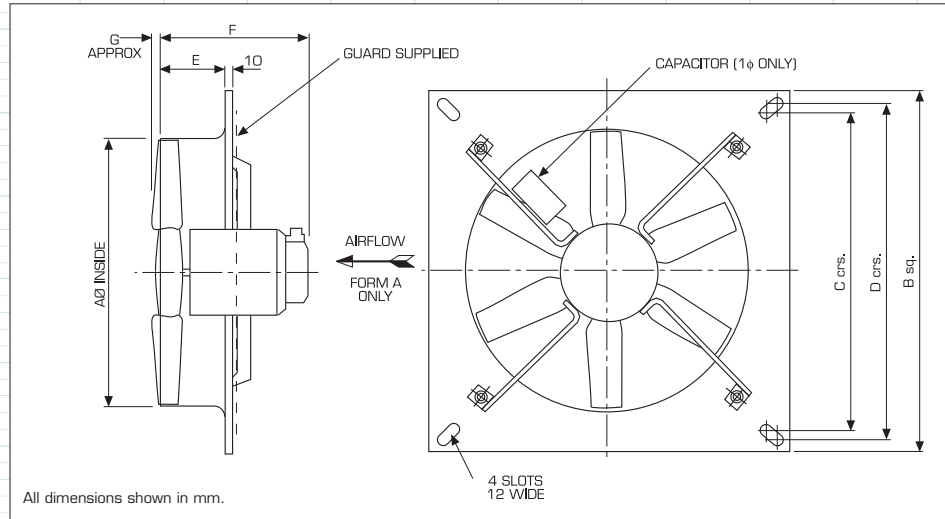
Email:
fans.uk@flaktwoods.com

Express Website:
www.flaktwoods.com/express

Fan Selector:
www.flaktwoods.com/fanselector

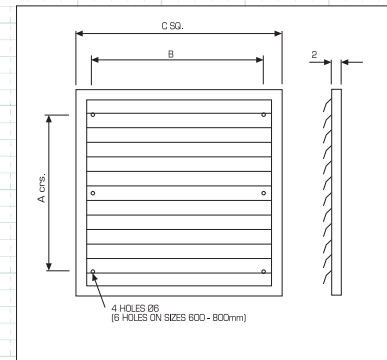
JM Plate Mounted Axial Plate Fans

Dimensions



Product Code	Motor Range	A	B	C	D	E	F	G	Weight (kg)
31JMP/16/4/5/40	1420	315	425	375	400	100	263	18	10
35JMP/16/4/5/34	1440	355	475	425	450	100	256	20	11
40JMP/16/4/5/40	1440	400	520	470	495	100	295	22	14
45JMP/16/4/5/40	1440	450	585	535	560	100	268	24	17
50JMP/16/4/5/30	1440	500	650	600	625	110	259	26	18
56JMP/16/4/5/30	1440	560	715	665	690	110	299	28	23
63JMP/16/4/3/24	1420	630	780	735	755	110	306	23	26

Louvre Shutter



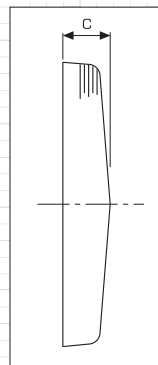
Suitable for fan ØA	A	B	C	Weight (kg)	Product Number
315	250	300	395	1	DA403715
355	300	350	445	1.25	DA403716
400	350	400	495	1.5	DA403717
450	400	450	545	1.75	DA403718
500	450	500	595	2	DA403719
560	500	550	645	2.2	DA410282
630	603	653	748	2.4	DA407949
670	654	704	799	2.9	407950
710					

Aluminium frames, plastic shutters. Shutters must be separated from the fan mounting plane by the following minimum distances:

- Up to 500mm Ø - 150mm
- 560 to 710mm Ø - 200mm
- 800, 1000mm Ø - 275mm

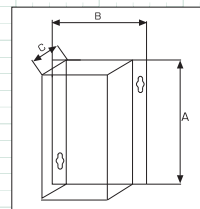
Note that under some combinations of fan speed and wind the shutters vanes may become unstable. This is more likely to occur at reduced fan speed.

Guard - JMP



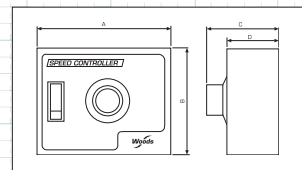
Suitable for fan ØA	C
280	110
315	110
355	110
400	110
450	110
500	110
560	110
630	110
710	110

Inverter



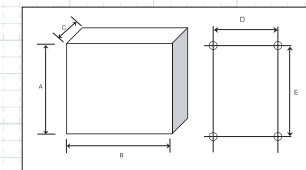
Type	Product Number	A	B	C	Weight (kg)
FWX1	430412	420	242	195	14.2
FWX2	430413	420	242	195	14.2

Electronic Controller



Type	Product Number	A	B	C	D
ME1.3	DA410290	148	87	62	47
ME1.6	DA410291	148	87	62	47

Transformer Controller



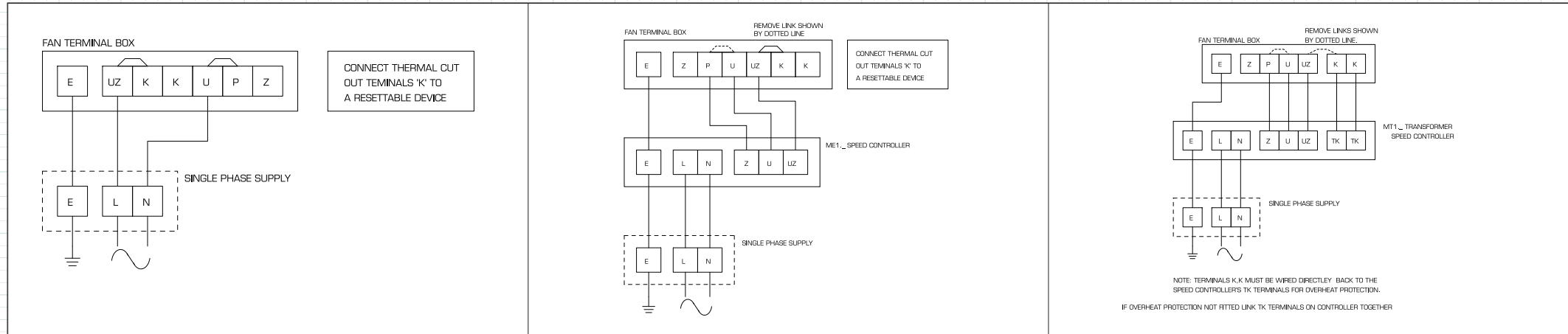
Type	Number Product	A	B	C	D	E	Max. Weight (kg)
MT1.5	423099	255	170	140	155	194	5.5
MT1.8	402009	325	300	185	255	255	8

CDW2100

Fan

Fan + Electronic Speed Controller

Fan + Transformer Speed Controller



CD2410

Fan

Fan + Transformer Speed Controller

