

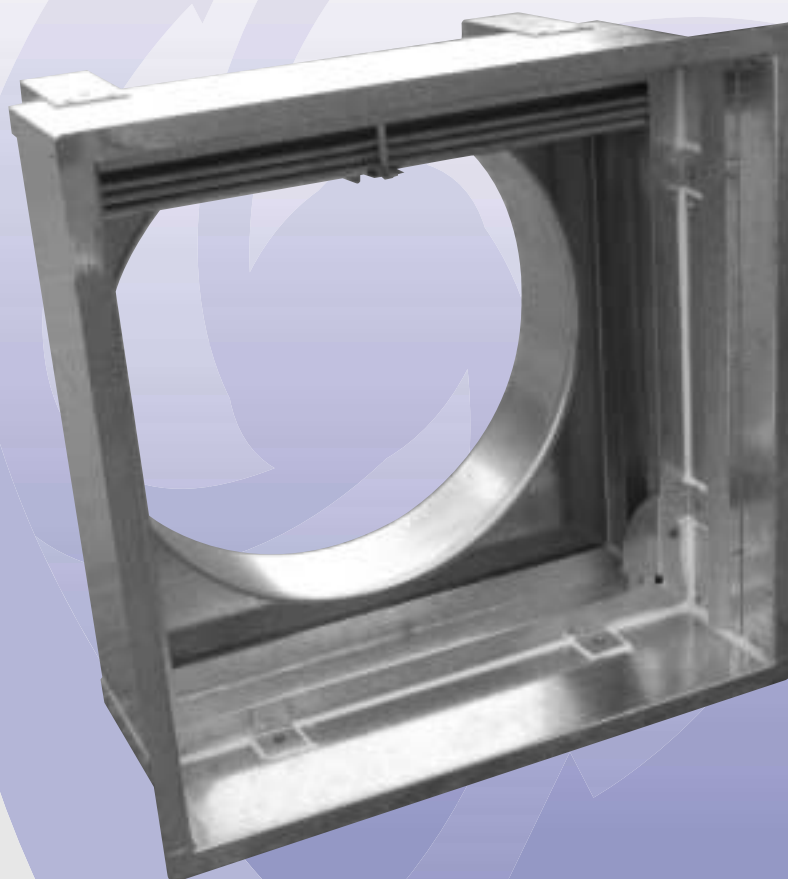
SERIES TCB/F SERIES SEB/F

Fire Rated Grille & Diffuser Connection Box

PUBLICATION

DIFFUSERS 16

JULY 2006



Features

- Intumescent or Curtain Fire Damper Protection
- Top or Side Entry Inlet
- Square or Circular Connection
- Galvanised Steel Construction (1.2mm)
- Designed to suit Louvred & Perforated Face Diffusers
- Designed to suit Various Grille Series



GILBERTS



SERIES TCB/F, SEB/F

Introduction

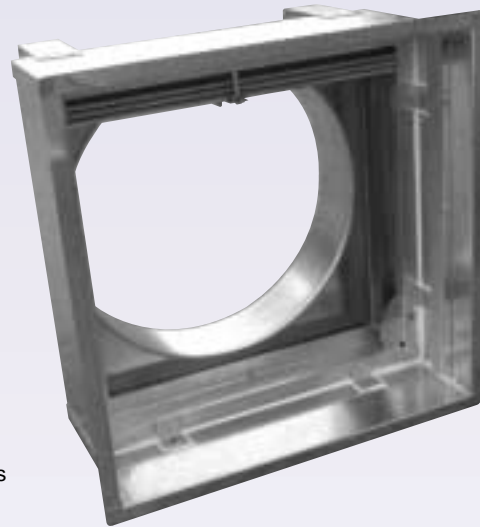
Gilberts TCB-F and SEB-F series are a range of purpose designed plenum/connection boxes with integral fire dampers designed to maintain the fire rated integrity in fire rated ceiling systems when used with a variety of grille and diffuser types. Manufactured from 1.2mm galvanised steel with stainless steel sealed rivets the units are available with either top or side entry connection in both square or circular format. The box assembly can be fitted with either an intumescent type fire damper or a curtain type fire damper and provides a one hour rating. The Fire Rated Box has been assessed by Warrington Fire Research to BS476 Pt20 1987 and both the Intumescent and Curtain Fire Dampers

have been fully tested to the same standard. Extra insulation and intumescent sealing is however required during box installation to complete the fire rated assembly.

The Air terminal is fitted into the box using a concealed bracket fixing arrangement which allows easy removal for access to the fire damper for inspection and maintenance. All boxes are complete with fixing angles for 8mm drop rod support. Recommended fixing methods for various ceiling layouts are detailed in this brochure.

Features

- Intumescent or Curtain Fire Damper Protection
- Top or Side Entry Inlet
- Square or Circular Connection
- Galvanised Steel Construction (1.2mm)
- Designed to suit Louvred & Perforated Face Diffusers
- Designed to suit Various Grille Series



Fire Rating

Gilberts fire rated boxes can be fitted with either Curtain type or Intumescent type fire dampers according to preference.

The intumescent option typically features a Gilberts FBL 120 damper design which, safely, has a fire rating far exceeding the 1 hour fire rating for the plenum. Manufactured from high performance intumescent slats in a Galvanised steel frame the damper is moisture resistant and needs little or no maintenance. Temperature reactive the damper will start to close at around 140°C and depending upon the temperature rise, will fully intumesce and close quickly to provide a fully

sealed barrier to smoke and flames.

The curtain fire damper option typically features a Gilberts FG1-FA design which, again, has a fire rating far exceeding the plenums 1 hour limit. With both the casing and blades manufactured from galvanised steel the FG1-FA incorporates a spring loaded blade pack held open by a fusible link. Separation of this link at 72°C allows the damper to close instantly. Removal of the Grille or Diffuser core also allows the link to be released manually and reset from the face for testing and inspection.

Installation

Typical installation methods are illustrated on page 4. All ductwork connections to the plenum must be thermally insulated. To complete the installation the external surfaces of the plenum must be insulated with mineral wool (by others). Minimum specification 60kg/m³, 25 mm thick grade 125W1, Temp range up to 750°C compliant with BS 3958.

In order to facilitate this, and to allow easy insertion of the box into the ceiling grid the spigot on Side Entry models is supplied loose. The spigot is a screw in design and should be sealed with intumescent paste upon fitting.

Selection Procedure

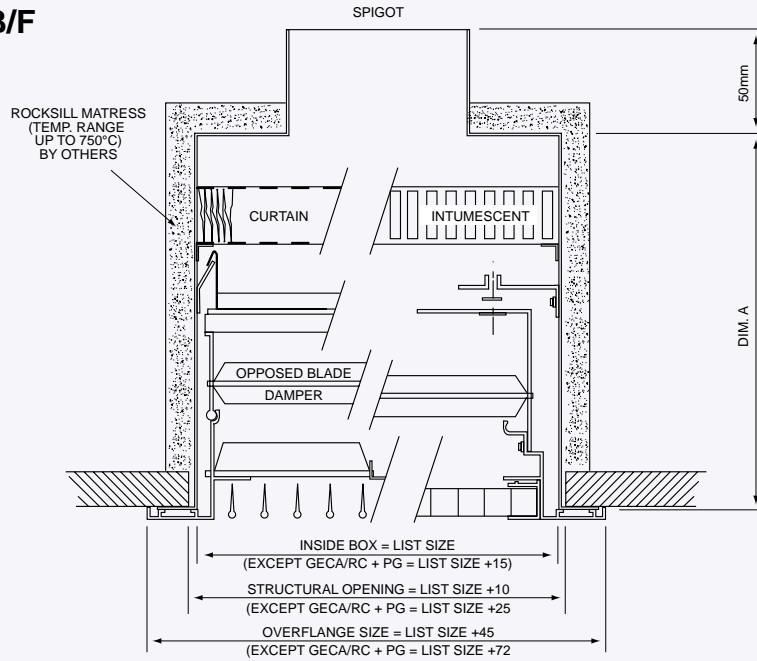
The TCB & SEB/F series of plenum connection boxes have been designed to suit a variety of grille and diffuser types. For sizing and selection information please refer to the datasheet on the grille or diffuser of choice.



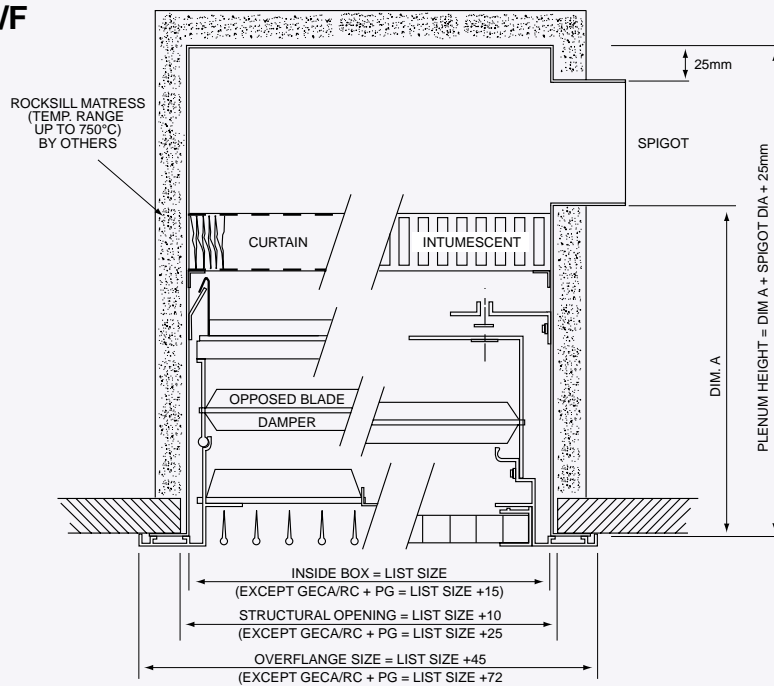
SERIES TCB/F, SEB/F

Grille Boxes

Type TCB/F Top Entry



Type SEB/F Side Entry



Grille Only

TYPE	DIM.A
GH & HH SERIES	265
GECA/RC & PG	225
GE,GC,K,LG & F	225

Grille c/w Damper

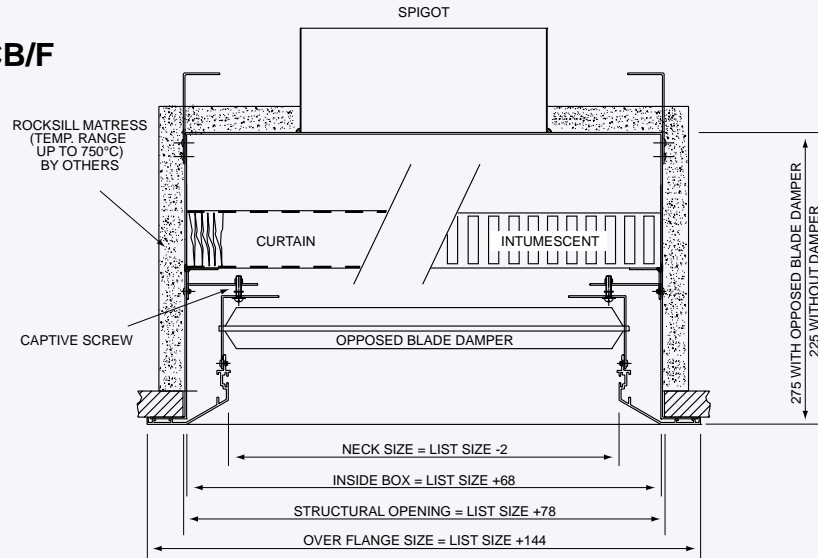
TYPE	DIM.A
GH & HH SERIES	315
GECA/RC & PG	275
GE,GC,K,LG & F	275



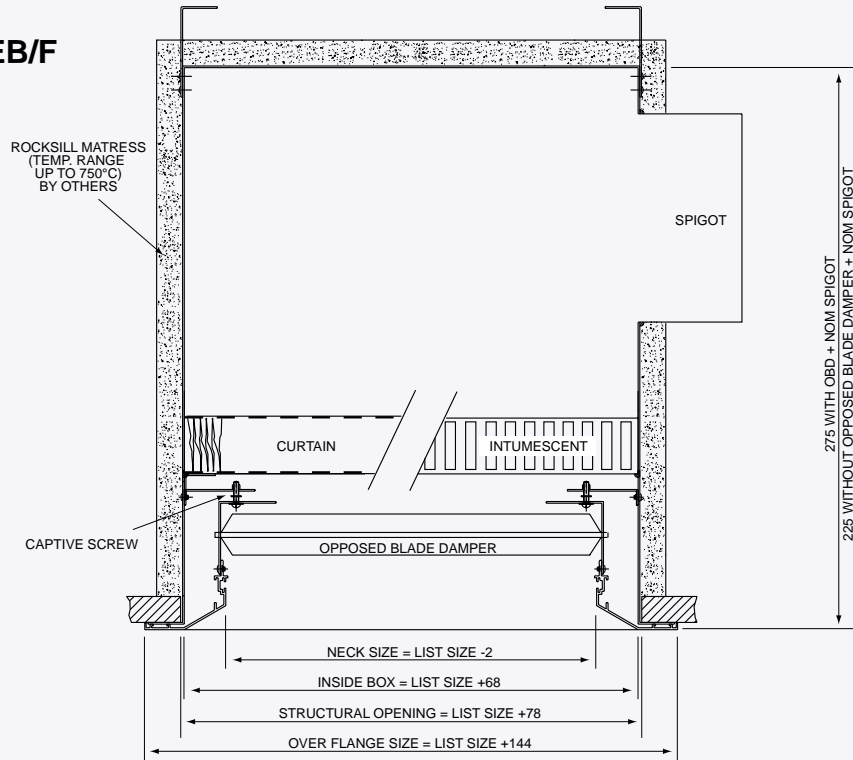
SERIES TCB/F, SEB/F

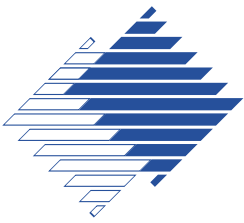
Diffuser Boxes

Type TCB/F



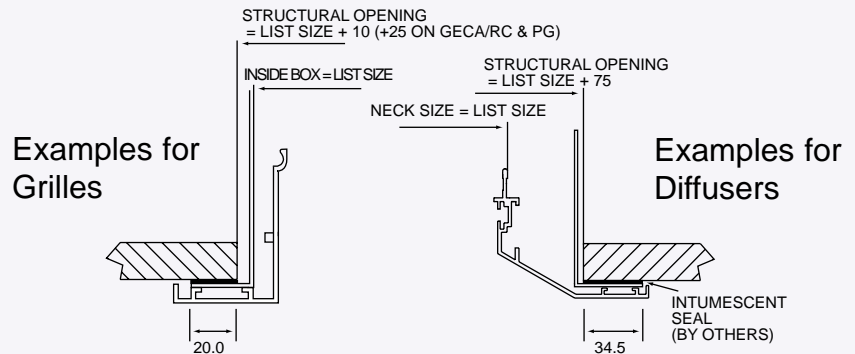
Type SEB/F





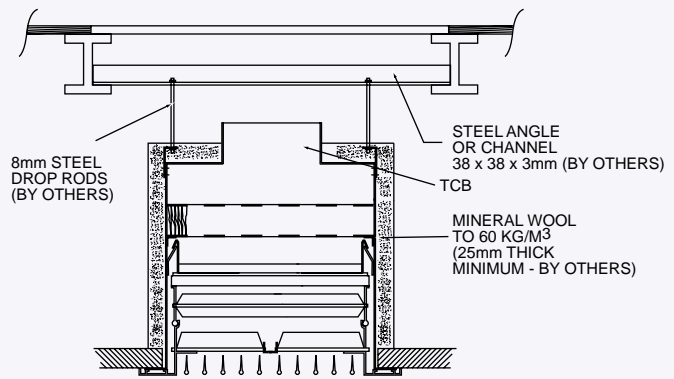
SERIES TCB/F, SEB/F

Structural Opening Details

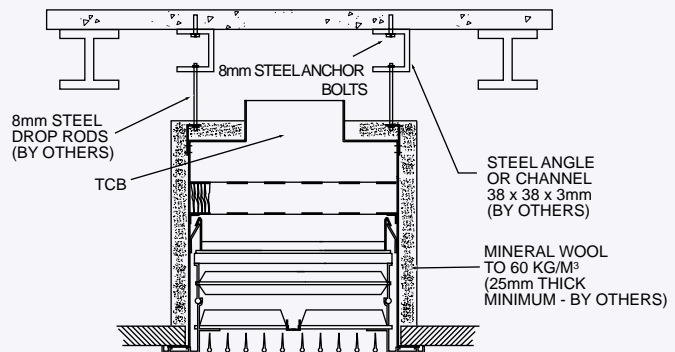


Fixing Methods

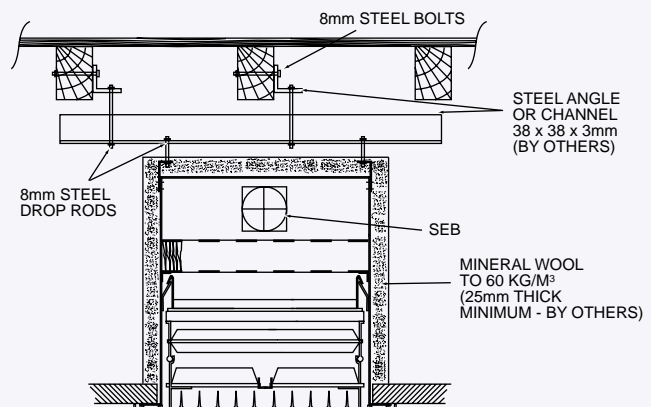
Mezzanine Floor

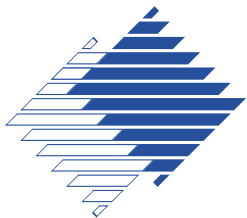


Concrete Ceiling



Timber Ceiling





SERIES TCB/F, SEB/F

Ordering Specification

TYPE TCB.....Top Connection SEB.....Side Connection	TCB	DG	FC	450 x 450	DQ 100 dia	TSO	DQ- 100 dia	4
GRILLE/DIFFUSER TYPE Please Specify i.e. DG, GH, GE								
FIRE RATED OPTION Intumescent Fire Damper.....FI Curtain Fire Dampe.....FC								
LIST SIZE OF GRILLE/DIFFUSER								
SPIGOT & DAMPER OPTIONS (Plus nominal spigot size): No Damper.....SS + Size Butterfly.....DB + Size Quadrant.....DQ + Size Iris.....DI + Size								
TWIN SPIGOT OPTION Adjacent.....TSO Opposite.....TSA								
TWIN SPIGOT DAMPER OPTION (see above)								
NUMBER REQUIRED								

Fixing

Standard fixing is by 8mm Steel drop rods to fixing angles at rear.
Recommended fixing methods as illustrated.

Finish

Galvanised Mild Steel

Size Range

Available sizes range from 150 x 150 upto 600 x 600 in 25mm increments.

Contact

GILBERTS

Head Office and Works
GILBERTS (BLACKPOOL) LTD
Gilair Works, Clifton Road,
Blackpool.
Lancashire FY4 4QT.
Telephone: (01253) 766911
Fax: (01253) 767941
e-mail: sales@gilbertsblackpool.com
Web: www.gilbertsblackpool.com

